

APT

Aluminum Profile Technology



CATÁLOGO
2023



www.aluminum-profile-technology.com

Aluminum Profiles 5

Bolts & Screws 23

Nut / Slut Nut 25

Accesories 29

Connectors 30

Leveling Feet 39

Hinges 44

Catches 46

Cable Clips & Uniblocks 46

End Caps and Slot Cover 47

Handles & Tool Hangers 50

Casters 51

Rollers 54

Connector Set 55

Wire Mesh 60

Technical Data for automation profiles

EN AW 6063	Material designation according to DIN EN 573
Rm	245 N/mm ² Minimum tensile strenght Rm
Rp 0,2	195 N/mm ² Proof stress in direction of pressure
A5	10% Ductile yield
A10	8% Ductile yield
E	approx. 70.000 N/mm ² Modulus of elasticity
HB	approx. 75 Brinell hardness
α	23,4 x 10 ⁻⁶ 1/K <i>Longitudinal expansion coefficient</i>
Tolerances	DIN EN 12020-2
Anodizing process	E6CO
Thickness of layer	10-15

List of abreviations

I_x	Moment of inertia
I_y	Moment of inertia
W_x	Section modulus
W_y	Section modulus
G	Mass (kg/m)
A	Profile Surface
VPE / PU	Packaging Unit
L	Lenght

Metric / US / Conversion Chart

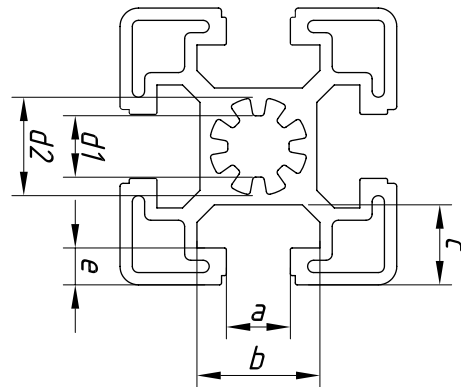
Measurement	Multiply	by	to get
Linear	millimeters (mm) inches meters feet	0.03937 25.4 3.2808 0.3048	inches millimeters (mm) feet meters
Area	centimeters ² (cm ²) inches ²	0.155 6.4516	inches ² centimeters ² (cm ²)
Mass	kilogramm (kg) pounds	2.2046 0.4536	pounds kilogram (kg)
Moment of inertia	centimeters ⁴ (cm ⁴) inches	0.02403 41.623	inches centimeters ⁴ (cm ⁴)
Moment of resistance	centimeters ³ (cm ³) inches ³	0.06102 16.387	inches ³ centimeters ³ (cm ³)

4

Tolerances Series 1



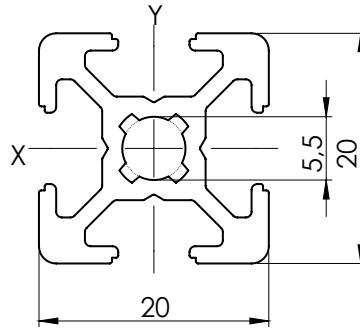
a	6,0 +0,3/-0	8,0 +0,3/-0	10,0 +0,4/-0
b	12 ±0,2	16,5 ±0,2	20,1 ±0,25
c	5,5 ±0,15	9,0 ±0,15	12,5 ±0,15 *
d	1,5 ±0,15	2,2 ±0,15	6,0 ±0,15
e	0,2 ±0,1	0,2 ±0,1	0,2 ±0,1
d1	5,5 +0,2/-0,1	7,3 +0,2/-0,1	10,0 ±0,15



* max. 14,5 ±0,15 bei / for B10 4545L

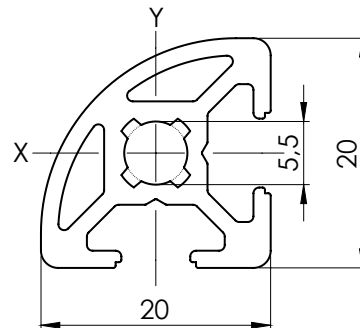
Series 1 Grid 20

Item Code	R6-2020L
I_x	0,68 cm ⁴
I_y	0,68 cm ⁴
W_x	0,68 cm ³
W_y	0,68 cm ³
G	0,44 kg/m
A	1,63 cm ²
VPE / PU	20 Stk. / pcs.
L	3000 mm

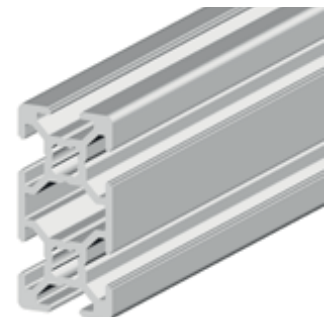
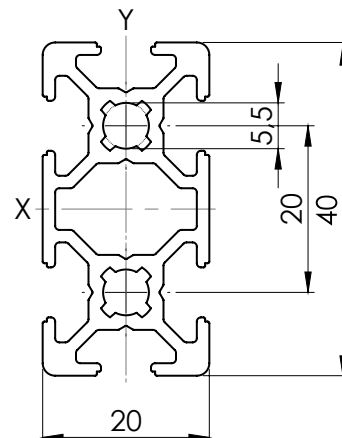


5

Item Code	R6-20R90
I_x	0,58 cm ⁴
I_y	0,58 cm ⁴
W_x	0,55 cm ³
W_y	0,55 cm ³
G	0,44 kg/m
A	1,62 cm ²
VPE / PU	20 Stk. / pcs.
L	3000 mm



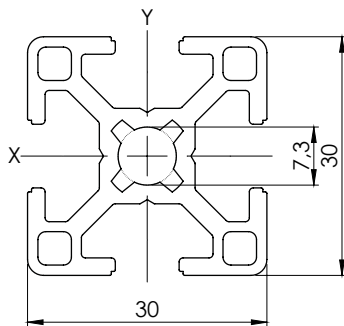
Item Code	R6-2040L
I_x	4,61 cm ⁴
I_y	1,20 cm ⁴
W_x	2,31 cm ³
W_y	1,20 cm ³
G	0,77 kg/m
A	2,87 cm ²
VPE / PU	24 Stk. / pcs
L	3000 mm



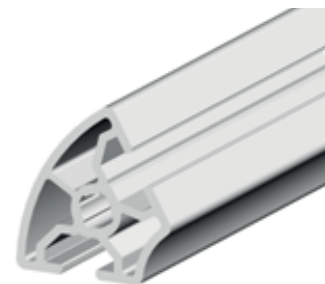
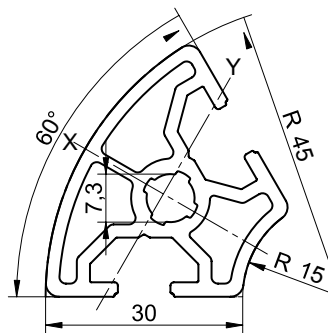
Series 1 Grid 30

6

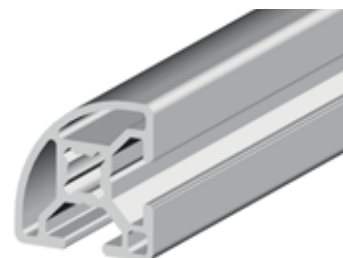
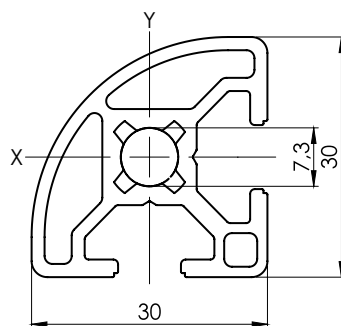
Item Code	R8-3030L
I_x	2,77 cm ⁴
I_y	2,77 cm ⁴
W_x	1,85 cm ³
W_y	1,85 cm ³
G	0,85 kg/m
A	3,14 cm ²
VPE / PU	20 Stk. / pcs.
L	6000 mm



Item Code	R8-30R60
I_x	4,25 cm
I_y	3,12 cm
W_x	1,95 cm ³
W_y	1,77 cm ³
G	1,01 kg/m
A	3,73 cm ²
VPE / PU	20 Stk. / pcs.
L	6000 mm



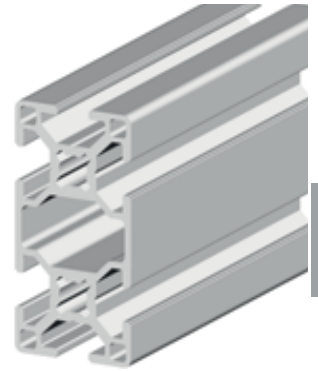
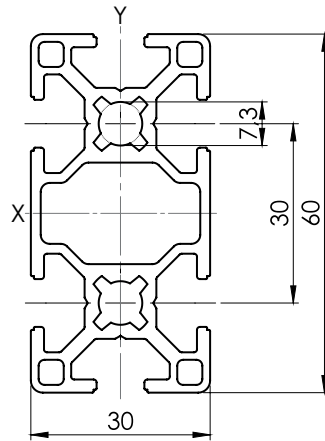
Item Code	R8-30R90
I_x	2,28 cm ⁴
I_y	2,28 cm ⁴
W_x	1,41 cm ³
W_y	1,41 cm ³
G	0,78 kg/m
A	2,88 cm ²
VPE / PU	20 Stk. / pcs.
L	6000 mm



Series 1 Grid 30



Item Code	R8-3060L
I_x	19,66 cm ⁴
I_y	5,09 cm ⁴
W_x	6,55 cm ³
W_y	3,39 cm ³
G	1,49 kg/m
A	5,53 cm ²
VPE / PU	10 Stk. / pcs.
L	6000 mm

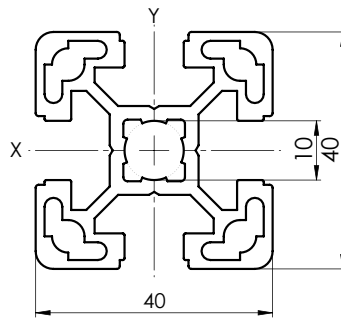


7

Series 1 Grid 40

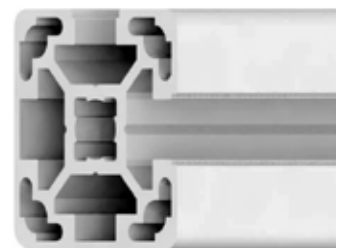
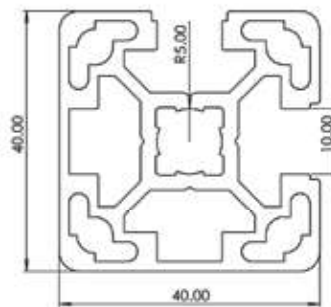


Item Code	R10-4040L
I_x	9,06 cm ⁴
I_y	9,06 cm ⁴
W_x	4,53 cm ³
W_y	4,53 cm ³
G	1,51 kg/m
A	5,61 cm ²
VPE / PU	20 Stk. / pcs.
L	6000 mm



Item Code R10-4040L2NE

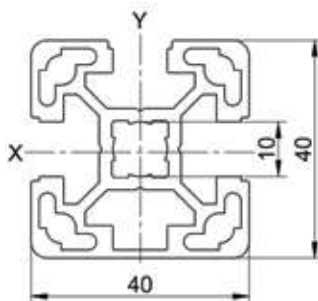
I_x	9,81 cm ⁴
I_y	9,81 cm ⁴
W_x	4,79 cm ³
W_y	4,79 cm ³
G	1,84 kg/m
A	6,83 cm ²
VPE / PU	16 pcs
L	6000 mm



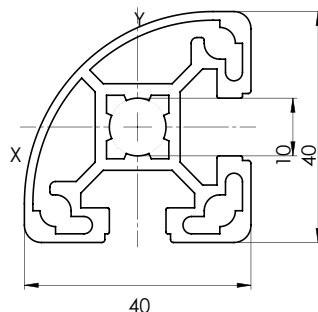
Series 1 Grid 40

8

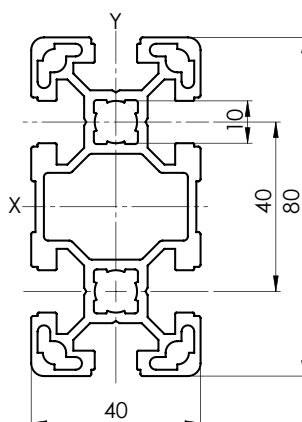
Item Code	R10-4040L3N
I_x	9,69 cm ⁴
I_y	9,08 cm ⁴
W_x	4,71 cm ³
W_y	4,54 cm ³
G	1,56 kg/m
A	5,79 cm ²
VPE / PU	20 Stk. / pcs.
L	6000 mm



Item Code	R10-40R90L
I_x	6,84 cm ⁴
I_y	6,84 cm ⁴
W_x	3,06 cm ³
W_y	3,06 cm ³
G	1,28 kg/m
A	4,75 cm ²
VPE / PU	20 Stk. / pcs.
L	6000 mm



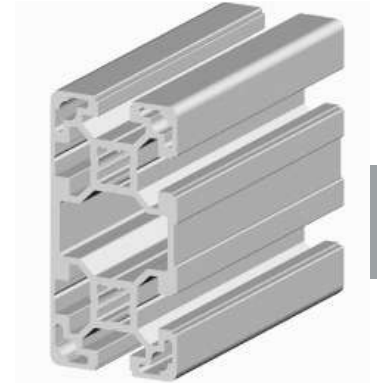
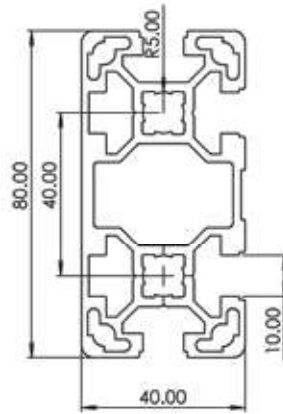
Item Code	R10-4080L
I_x	63,24 cm ⁴
I_y	17,23 cm ⁴
W_x	15,81 cm ³
W_y	8,61 cm ³
G	2,67 kg/m
A	9,86 cm ²
VPE / PU	12 Stk. / pcs.
L	6000 mm



Series 1 Grid 40

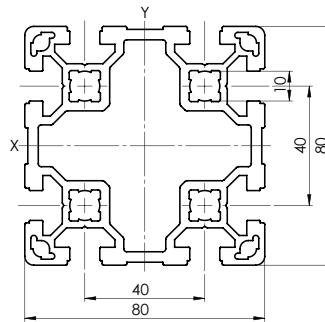


Item Code	R10-4080L4N
I_x	71,49 cm ⁴
I_y	18,16 cm ⁴
W_x	17,87 cm ³
W_y	8,83 cm ³
G	3,15 kg/m
A	11,66 cm ²
VPE / PU	8 pcs
L	6000 mm



9

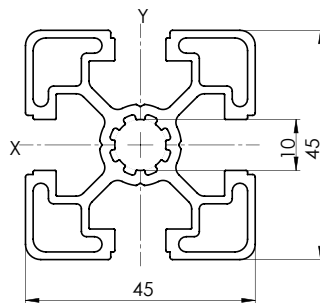
Item Code	R10-8080L
I_x	132,62 cm ⁴
I_y	132,62 cm ⁴
W_x	33,16 cm ³
W_y	33,16 cm ³
G	4,98 kg/m
A	18,45 cm ²
VPE / PU	6 Stk. / pcs.
L	6000 mm



Series 1 Grid 45



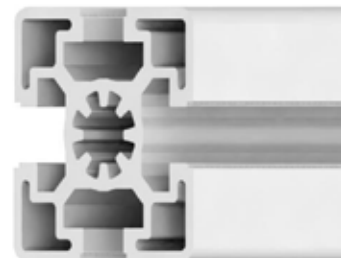
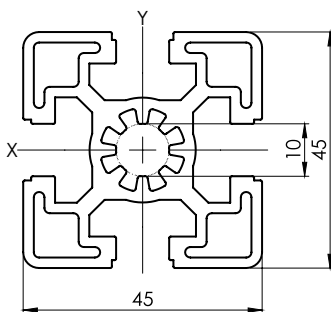
Item Code	R10-4545L
I_x	11,00 cm ⁴
I_y	11,00cm ⁴
W_x	4,89 cm ³
W_y	4,89 cm ³
G	1,55 kg/m
A	5,73 cm ²
VPE / PU	20 Stk. / pcs.
L	6000 mm



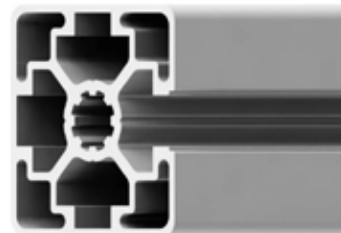
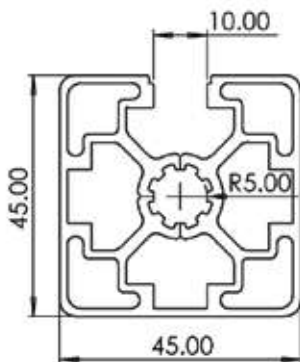
Series 1 Grid 45

10

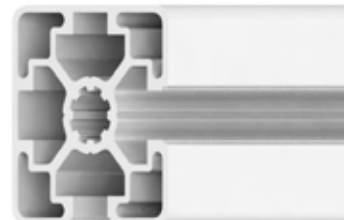
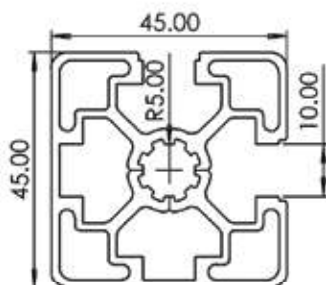
Item Code	R10-4545
I_x	13,94 cm ⁴
I_y	13,94 cm ⁴
W_x	6,19 cm ³
W_y	6,19 cm ³
G	2,03 kg/m
A	7,50 cm ²
VPE / PU	20 Stk. / pcs
L	6000 mm



Item Code	R10-4545L1N
I_x	11,85 cm ⁴
I_y	12,68 cm ⁴
W_x	5,13 cm ³
W_y	5,64 cm ³
G	1,69 kg/m
A	6,25 cm ²
VPE / PU	20 pcs
L	6000 mm

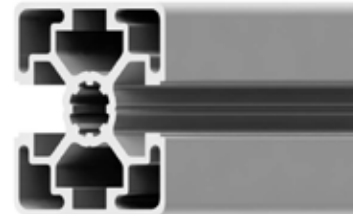
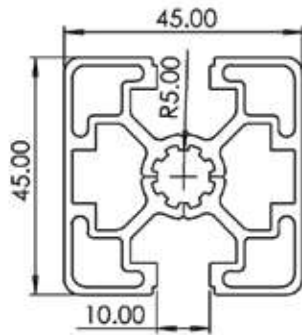


Item Code	R10-4545L2NE
I_x	11,82 cm ⁴
I_y	11,82 cm ⁴
W_x	5,11 cm ³
W_y	5,11 cm ³
G	1,64 kg/m
A	6,08 cm ²
VPE / PU	20 pcs
L	6000 mm



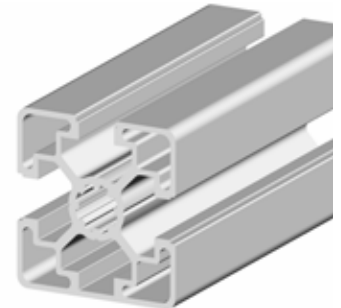
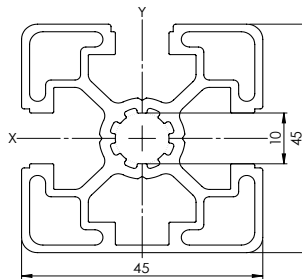
Series 1 Grid 45

Item Code	R10-4545L2NP
I_x	11,04 cm ⁴
I_y	12,66 cm ⁴
W_x	4,91 cm ³
W_y	5,63 cm ³
G	1,64 kg/m
A	6,08 cm ²
VPE / PU	20 pcs
L	6000 mm

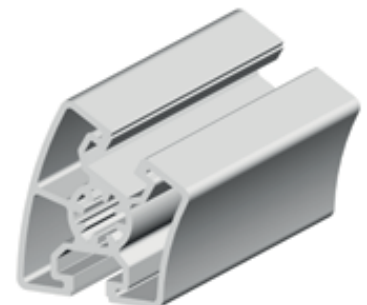
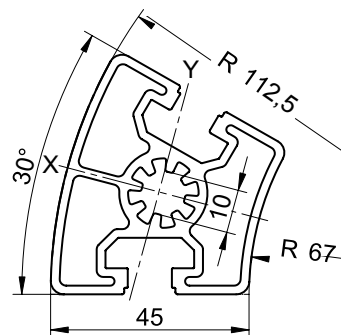


11

Item Code	R10-4545L3N
I_x	11,65 cm ⁴
I_y	10,87 cm ⁴
W_x	5,03 cm ³
W_y	4,83 cm ³
G	1,57 kg/m
A	5,83 cm ²
VPE / PU	20 Stk. / pcs.
L	6000 mm



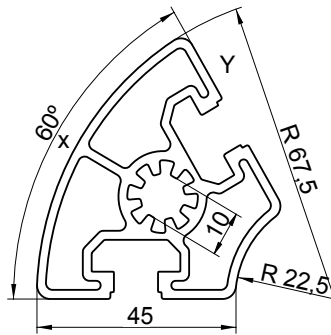
Item Code	R10-45R30
I_x	15,18 cm ⁴
I_y	12,72 cm ⁴
W_x	5,34 cm ³
W_y	5,04 cm ³
G	1,86 kg/m
A	6,89 cm ²
VPE / PU	20 Stk. / pcs.
L6	6000 mm



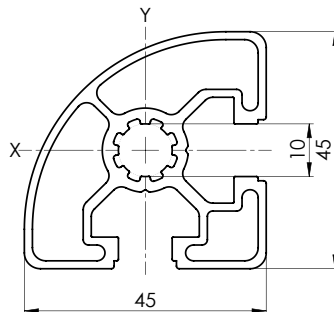
Series 1 Grid 45

12

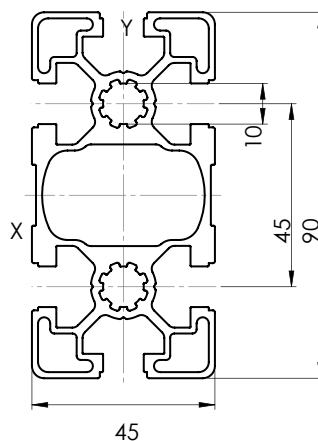
Item Code	R10-45R60
I_x	11,4 cm ⁴
I_y	16,9 cm ⁴
W_x	4,4 cm ³
W_y	11,4 cm ³
G	1,8 kg/m
A	6,8 cm ²
VPE / PU	20 Stk. / pcs.
L	6000 mm



Item Code	R10-45R90L
I_x	8,01 cm ⁴
I_y	8,01 cm ⁴
W_x	3,20 cm ³
W_y	3,20 cm ³
G	1,27 kg/m
A	4,70 cm ²
VPE / PU	20 Stk. / pcs.
L	6000 mm

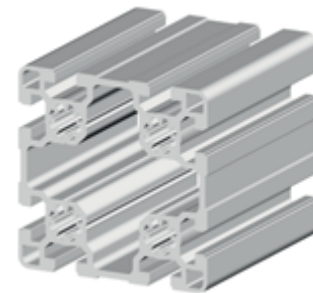
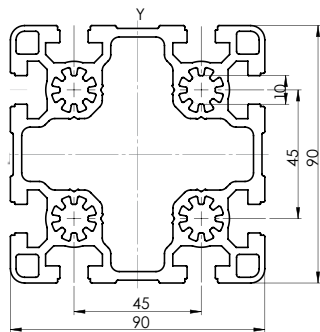


Item Code	R10-4590L
I_x	81,82 cm ⁴
I_y	23,53 cm ⁴
W_x	18,18 cm ³
W_y	10,46 cm ³
G	3,05 kg/m
A1	1,29 cm ²
VPE / PU	12 Stk. / pcs.
L	6000 mm

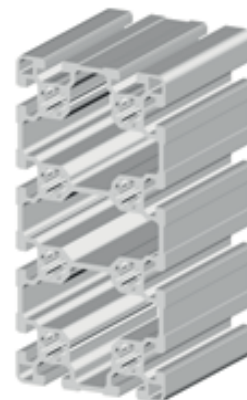
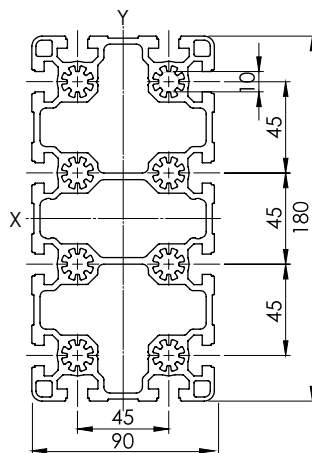


Series 1 Grid 45

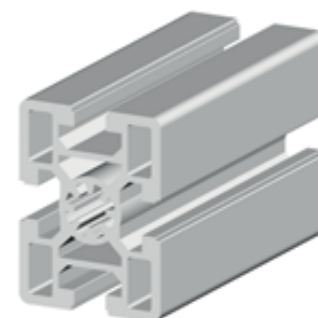
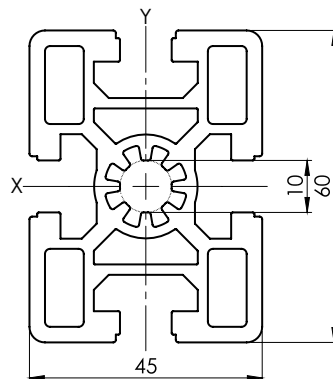
Item Code	R10-9090L
I_x	210,50 cm
I_y	210,50 cm
W_x	46,78 cm ³
W_y	46,78 cm ³
G	6,34 kg/m
A	23,46 cm ²
VPE / PU	6 Stk. / pcs
	6000 mm



Item Code	R10-90180L
I_x	1.379,86 cm ⁴
I_y	398,86 cm ⁴
W_x	153,1 cm ³
W_y	88,63 cm ³
G	11,41 kg/m
A	42,26 cm ²
VPE / PU	3 Stk. / pcs
L	6000 mm



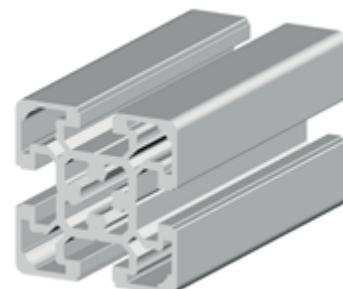
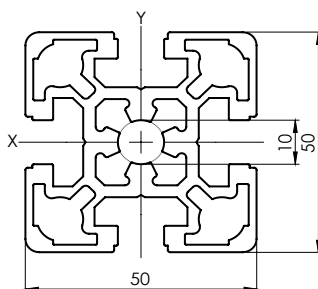
Item Code	R10-4560
I_x	37,55 cm ⁴
I_y	22,66 cm ⁴
W_x	12,52 cm ³
W_y	10,07 cm ³
G	3,01 kg/m
A	11,14 cm ²
VPE / PU	20 Stk. / pcs .
L	6000 mm



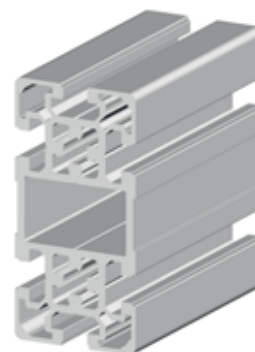
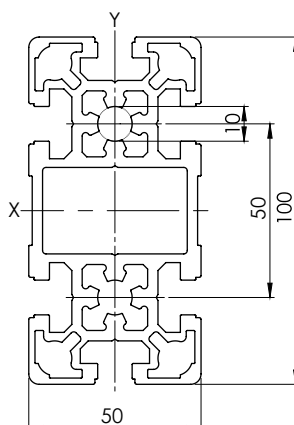
Series 1 Grid 50

14

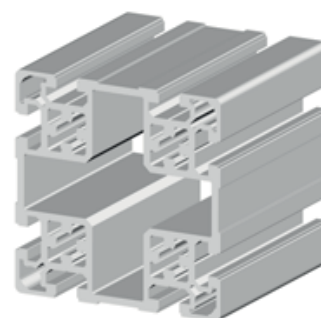
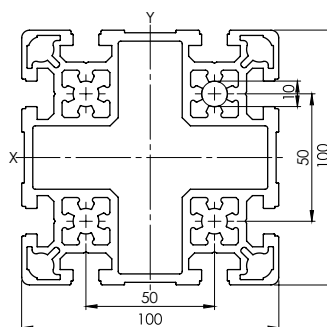
Item Code	R10-5050L
I_x	21,68 cm ⁴
I_y	21,68 cm ⁴
W_x	8,67 cm ³
W_y	8,67 cm ³
G	2,57 kg/m
A	9,52 cm ²
VPE / PU	20 Stk. / pcs.
L	6000 mm



Item Code	R10-50100L
I_x	165,70 cm
I_y	43,00 cm
W_x	33,14 cm ³
W_y	17,20 cm ³
G	4,73 kg/m
A	17,51 cm ²
VPE / PU	10 Stk. / pcs
L	6000 mm

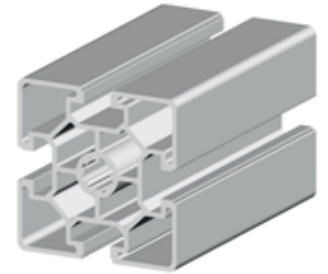
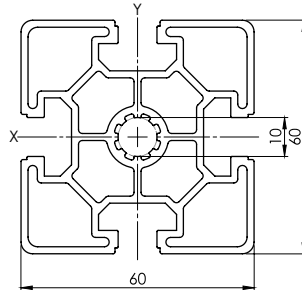


Item Code	R10-100100L
I_x	318,90 cm
I_y	318,90 cm
W_x	63,78 cm ³
W_y	63,78 cm ³
G	8,12 kg/m
A	30,10 cm ²
VPE / PU	6 Stk. / pcs
L	6000 mm



Series 1 Grid 60

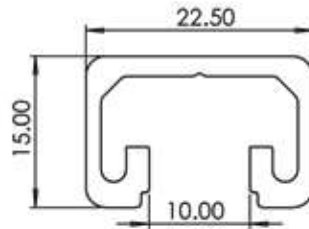
Item Code	R10-6060L
I_x	31,71 cm
I_y	31,71 cm
W_x	10,57 cm ³
W_y	10,57 cm ³
G	2,57 kg/m
A	9,52 cm ²
VPE / PU	20 Stk. / pcs.
L	6000 mm



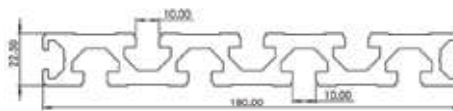
15

Series 1 Special Profiles

Item Code	R10-1522
I_x	0,33 cm ⁴
I_y	0,81 cm ⁴
W_x	0,40 cm ³
W_y	0,72 cm ³
G	0,33 kg/m
A	1,21 cm ²
VPE / PU	10 pcs
L	3000 mm

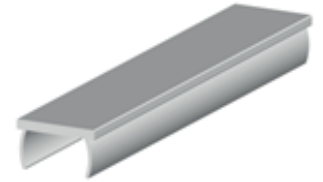
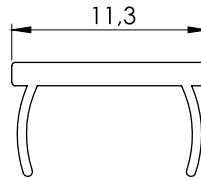


Item Code	R10-22.5180
I_x	581,99 cm ⁴
I_y	11,79 cm ⁴
W_x	64,67 cm ³
W_y	10,24 cm ³
G	5,80 kg/m
A	21,48 cm ²
VPE / PU	6 pcs
L	6060 mm

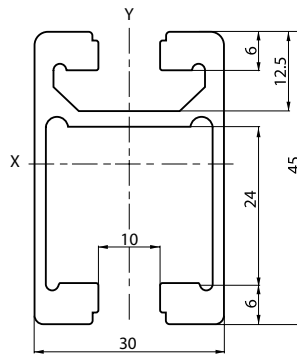


Series 1 Special Profiles

Item Code	R10-Abdeckprofil
G	0,057 kg/m
A	0,21 cm ²
VPE / PU	25 Stk. / pcs.
L	2000 mm

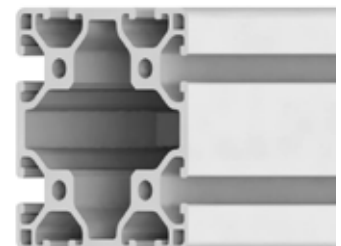
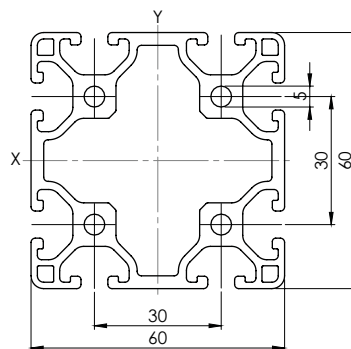


Item Code	R10-3045LWP
I _x	10,3 cm ⁴
I _y	5,6 cm ⁴
W _x	4,2 cm ³
W _y	3,7 cm ³
G	1,2 kg/m
A	4,4 cm ²
VPE / PU	20 Stk. / pcs.
L	



Series 1 Grid 30

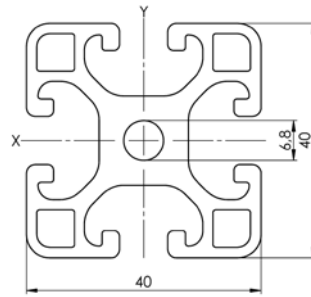
Item Code	R6-6060L
I _x	38,69 cm ⁴
I _y	38,69 cm ⁴
W _x	12,90 cm ³
W _y	12,90 cm ³
G	2,62 kg/m
A	9,71 cm ²
VPE / PU	4 pcs
L	6000 mm



Series 1 Grid 40

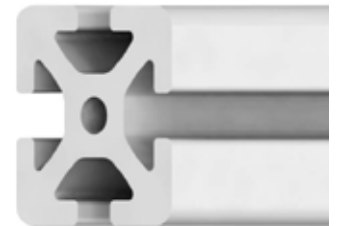
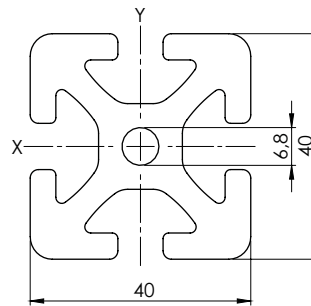


Item Code	R8-4040L
I_x	9,18 cm ⁴
I_y	9,18 cm ⁴
W_x	4,59 cm ³
W_y	4,59 cm ³
G	1,75 kg/m
A	6,48 cm ²
VPE / PU	16 Stk. / pcs.
L	6000 mm

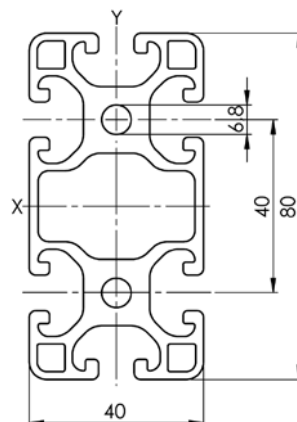


17

Item Code	R8-4040
I_x	14,14 cm ⁴
I_y	14,14 cm ⁴
W_x	7,07 cm ³
W_y	7,07 cm ³
G	2,47 kg/m
A	9,14 cm ²
VPE / PU	16 pcs
L	6000 mm



Item Code	R8-4080L
I_x	70,07 cm ⁴
I_y	16,93 cm ⁴
W_x	17,52 cm ³
W_y	8,47 cm ³
G	3,05 kg/m
A	11,31 cm ²
VPE / PU	8 Stk. / pcs.
L	6000 mm

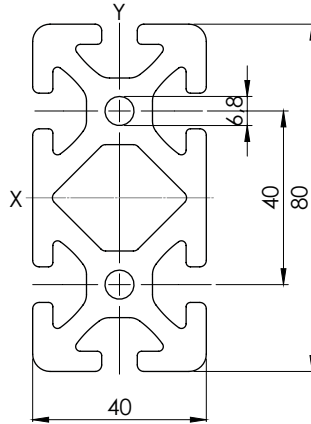


Series 1 Grid 40

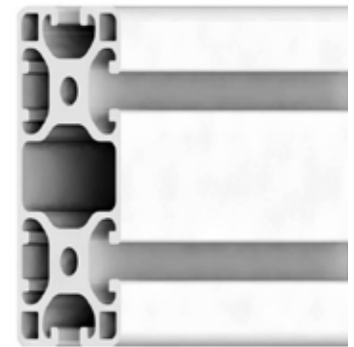
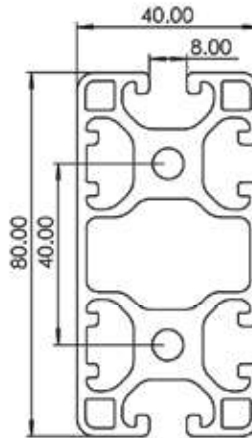


18

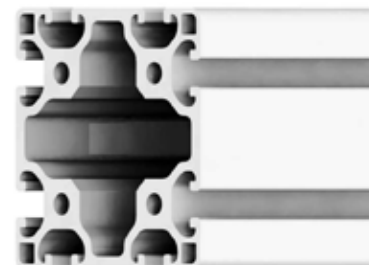
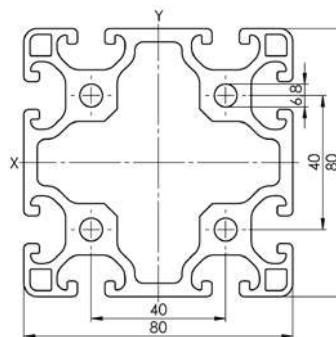
Item Code	R8-4080
I_x	101,41 cm ⁴
I_y	27,21 cm ⁴
W_x	25,35 cm ³
W_y	13,61 cm ³
G	4,52 kg/m
A	16,74 cm ²
VPE / PU	8 pcs
L	6000 mm



Item Code	R8-4080L4N
I_x	71,49 cm ⁴
I_y	18,16 cm ⁴
W_x	17,87 cm ³
W_y	8,83 cm ³
G	3,15 kg/m
A	11,66 cm ²
VPE / PU	8 pcs
L	6000 mm



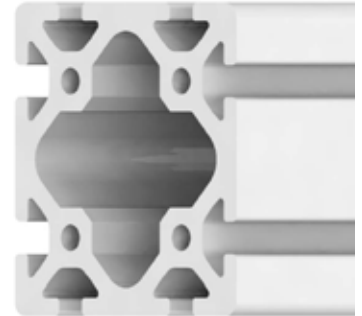
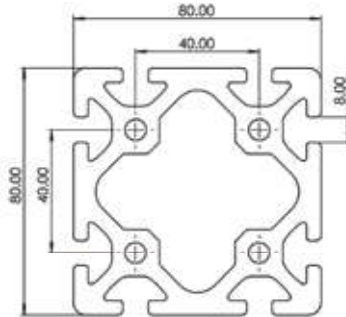
Item Code	R8-8080L
I_x	134,90 cm ⁴
I_y	134,90 cm ⁴
W_x	33,72 cm ³
W_y	33,72 cm ³
G	5,33 kg/m
A	19,75 cm ²
VPE / PU	4 Stk. / pcs.
L	6000 mm



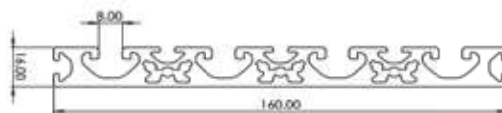
Series 1 Grid 40



Item Code	R8-8080
I_x	188,05 cm ⁴
I_y	188,05 cm ⁴
W_x	47,01 cm ³
W_y	47,01 cm ³
G	7,17 kg/m
A	26,57 cm ²
VPE / PU	4 pcs
L	6000 mm

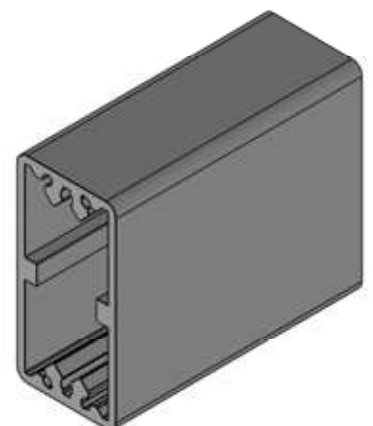
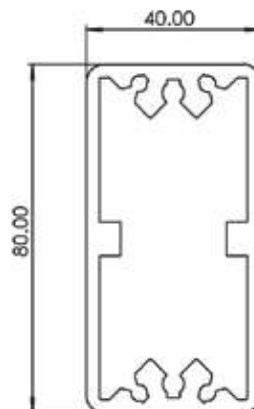


Item Code	R8-16160
I_x	3,76 cm ⁴
I_y	304,40 cm ⁴
W_x	4,19 cm ³
W_y	38,05 cm ³
G	3,70 kg/m
A	13,69 cm ²
VPE / PU	5 pcs
L	3060 mm



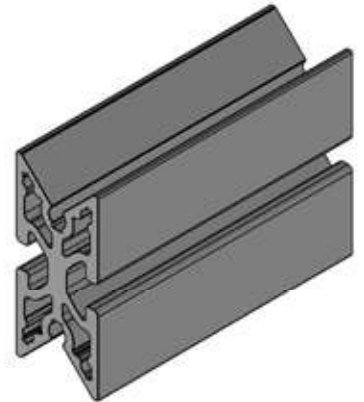
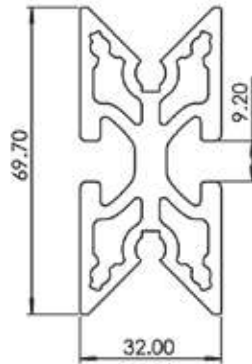
Series 1 Special Profiles

Item Code	R8-4080T
Weight	2.58 kg/m
Packaging unit	4 pcs
Lenght	6060 mm



Series 1 Special Profiles

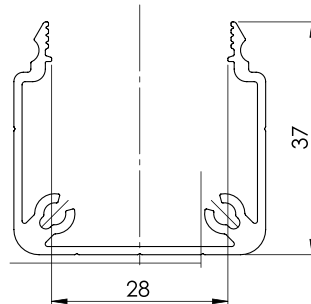
Item Code	R8-4080TI
Weight	2.58 kg/m
Packaging unit	4 pcs
Length	6060 mm



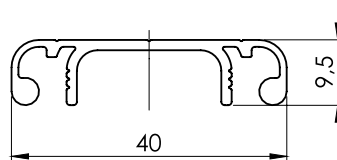
20

Series 2 Special Profiles

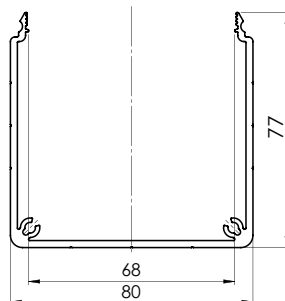
Item Code	RK-4040
G	0,58 kg/m
A	21,6 cm ²
VPE / PU	12 Stk. / pcs.
L	3000 mm



Item Code	RK-40D
G	0,31 kg/m
A	11,35 cm ²
VPE / PU	12 Stk. / pcs
L	3000 mm

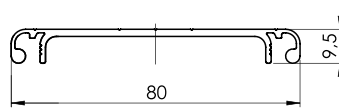


Item Code	RK-8080
G	1,53 kg/m
A	56,7 cm ²
VPE / PU	8 Stk. / pcs.
L	3000 mm



Series 2 Special Profiles

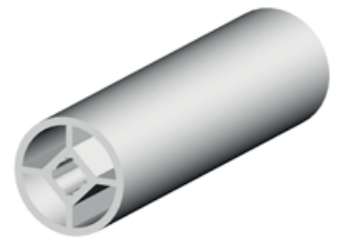
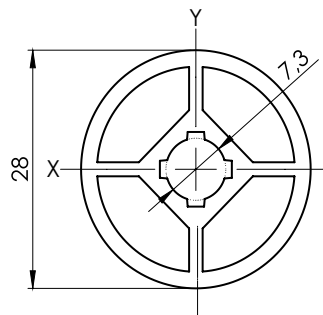
Item Code	RK-80D
G	0,55 kg/m
A	20,4 cm ²
VPE / PU	8 Stk. / pcs.
L	3000 mm



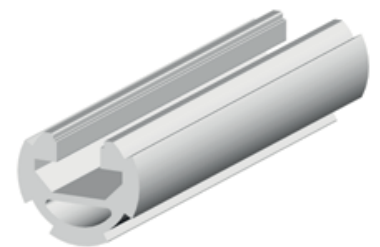
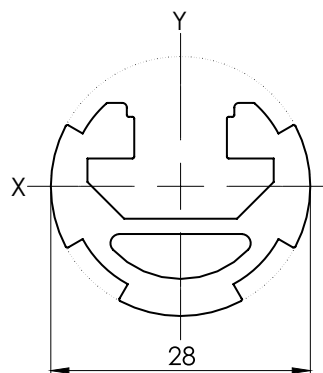
21

Round Profile D28

Item Code	R-D28
I_x	1,61 cm
I_y	1,61 cm
W_x	0,58 cm ³
W_y	0,58 cm ³
G	0,71 kg/m
A	2,63 cm ²
VPE / PU	20 Stk. / pcs.
L6	6000 mm

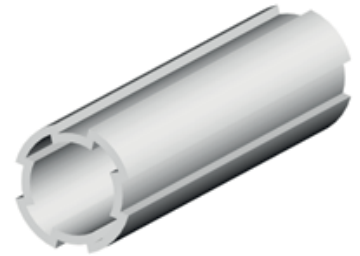
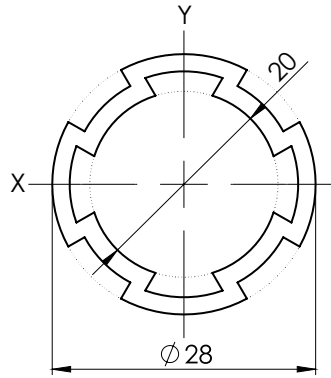


Item Code	R10-D28L
I_x	1,02 cm
I_y	1,97 cm
W_x	0,88 cm ³
W_y	1,41 cm ³
G	0,71 kg/m
A	2,63 cm ²
VPE / PU	20 Stk. / pcs.
L	6000 mm

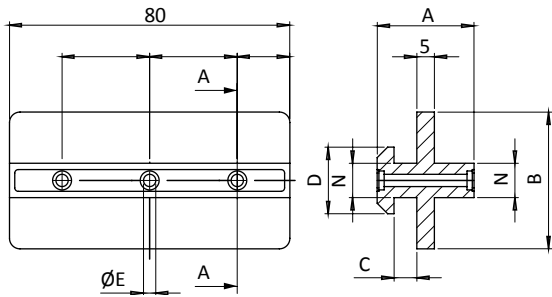


Round Profile D28

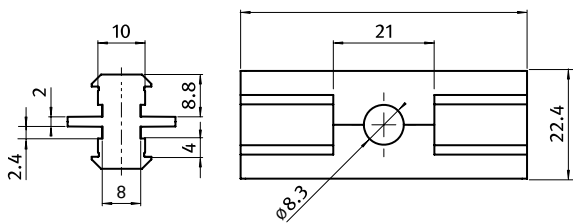
Item Code	R-D28L
I_x	1,33 cm ⁴
I_y	1,33 cm ⁴
W_x	0,50 cm ³
W_y	0,50 cm ³
G	0,48 kg/m
A	1,79 cm ²
VPE / PU	20 Stk. / pcs
L	6000 mm



Series 2 Special Profiles

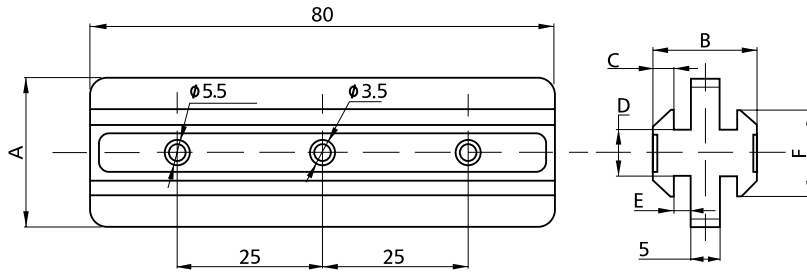


Item No.	N	A [mm]	B [mm]	C [mm]	D [mm]	E [mm]	Weight	Material
LAM-0300-A	10	27.6	39.0	65.0	19.0	3.5	48.0	Plastic POM



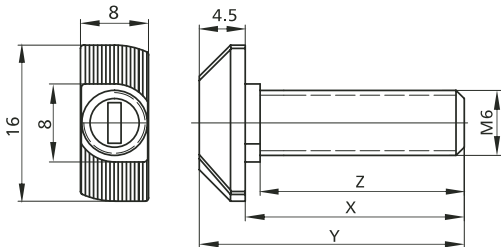
Slot	Item No.	N	Weight [g]	Material	Finish
8+10	LAM-0300-BC	8/10	9.0	Plastic POM	Natural

Series 2 Special Profiles

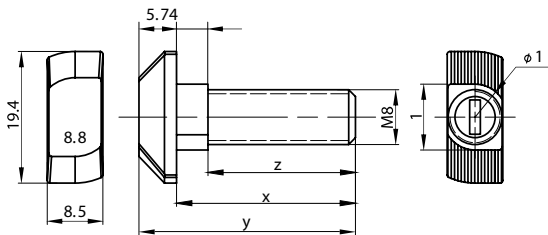


Slot	Item No.	A	B	C	D	E	F	Material	Finish
	LAM-0300-BB2	25.5	18	3.53	8	3	14.9	Plastic/POM	White
	LAM-0300-CC2	38	28	4.76	10	6.8	19	Plastic/POM	White

Bolts & Screws / T Slot Bolt

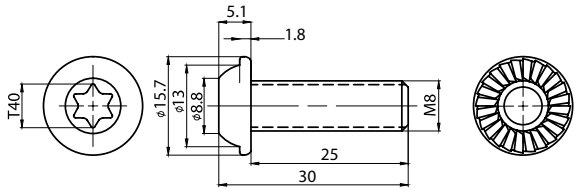


Slot	Item No.	X	Y	Z	Material	Finish
	LAM-T408B-16	16	20.5	14,5	Steel/class 8.8	Zinc Blue

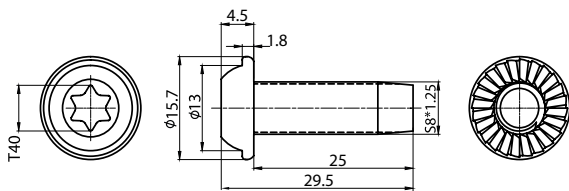


Slot	Item No.	M	X	Y	Z	Material	Finish
	LAM-T410B-20	M8	20	25.7	16	Steel/class 8.8	Zinc Blue
	LAM-T410B-25	M8	25	30.7	21		
	LAM-T410B-30	M8	30	35.7	26		

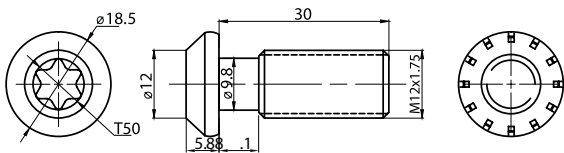
Bolts & Screws / T Slot Bolt



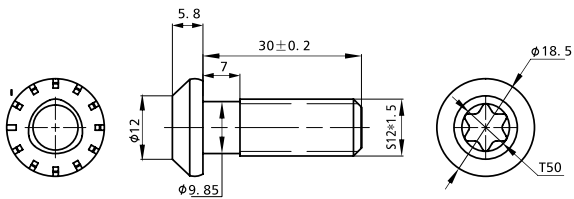
Item No.	Spec.	Material	Finish
LAM-CB-M8	M8*25	Steel/class 8.8	Zinc Blue



Item No.	Spec.	Material	Finish
LAM-CB-S8	S8*25, Self-Tapping	Steel/class 10.9	Zinc Blue

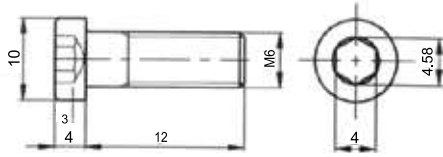


Item No.	Spec.	Material	Finish
LAM-CB-M12-30	M12*30	Steel/class 8.8	Zinc Blue

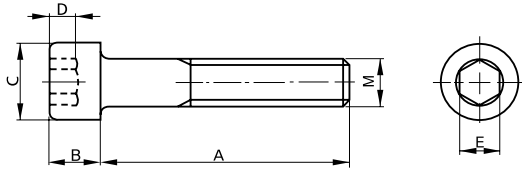


Item No.	Spec.	Material	Finish
LAM-CB-S12-30	S12*30, Self-Tapping	Steel/class 10.9	Zinc Blue

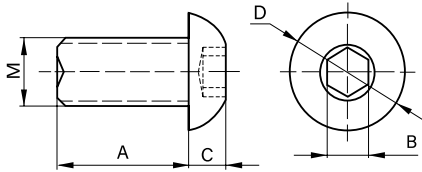
Bolts & Screws / T Slot Bolt



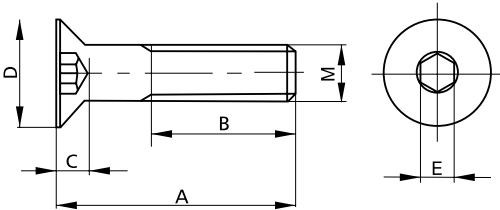
Item No.	Spec.	Material	Finish
LAM-FRC-M6-12	M6*12	Steel	Nickel



Item No.	Spec.	M	A	B	C	D	E	Material	Finish
LAM-FRC-M5X16	M5*16	M5	16	5	8.5	2.5	4	Steel	Black
LAM-FRC-M5X20	M5*20	M5	20	5	8.5	2.5	4	Steel	Black
LAM-FRC-M6X16	M6*16	M6	16	5	10	3	5	Steel	Black
LAM-FRC-M6X20	M6*20	M6	20	5	10	3	5	Steel	Black

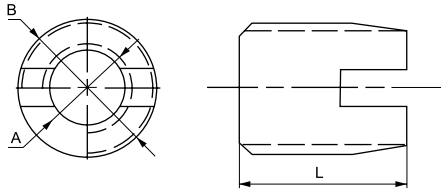


Item No.	Spec.	M	A	B	C	D	Material
LAM-FRB-M6X16	M6*16	M6	16	4	3.3	10.5	Stainless Steel
LAM-FRB-M6X20	M6*20	M6	20	4	3.3	10.5	Stainless Steel
LAM-FRB-M8X16	M8*16	M8	16	5.1	4.5	14	Stainless Steel
LAM-FRB-M8X20	M8*20	M8	20	5.1	4.5	14	Stainless Steel



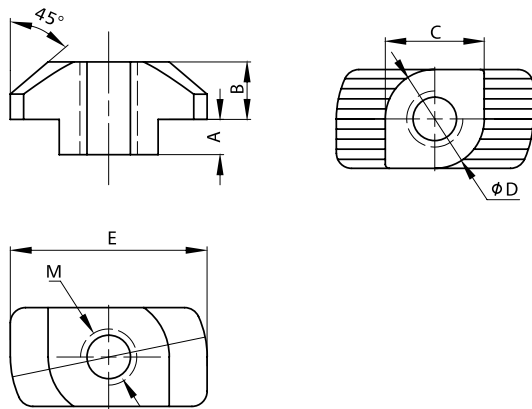
Item No.	Spec.	M	A	B	C	D	E	Material	Finish
LAM-FRP-M4X10	M4*10	M4	10	8	2	7.9	2.1	Steel	Black
LAM-FRP-M5X10	M5*10	M5	10	7.2	2.8	10	3	Steel	Black
LAM-FRP-M6X10	M6*10	M6	10	6	4	11.8	4	Steel	Black
LAM-FRP-M6X16	M6*16	M6	16	12	4	11.8	4	Steel	Black
LAM-FRP-M8X16	M8*16	M8	16	11	5	15.6	5	Steel	Black
LAM-FRP-M8X30	M8*30	M8	30	25	5	15.6	5.1	Steel	Black
LAM-FRP-M12X30	M12*30	M12	30	25	5	15.6	5.1	Steel	Black

Bolts & Screws / T Slot Bolt

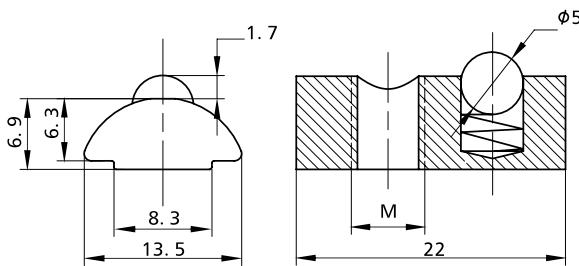


Item No.	A	B	L	Material	Finish
LAM-BU-M12-M8	M8*1.25	M12*1.5	15	Alloy steel Class 10.9	Zinc yellow

Nut / T Slot Nut

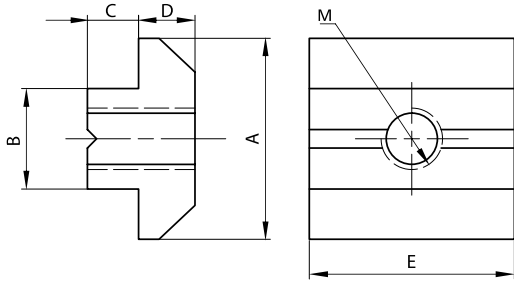


Slot	Item No.	Spec.	A	B	C	D	E	Material	Finish
	LAM-NUT-R6-M4	M4	1	3.2	5.7	5.7	11.5	Steel	Zinc Blue
	LAM-NUT-R8-M4	M4	1.7	4.7	7.9	7.9	16	Steel	Zinc Blue
	LAM-NUT-R8-M5	M5	1.7	4.7	7.9	7.9	16	Steel	Zinc Blue
	LAM-NUT-R8-M6	M6	1.7	4.7	7.9	7.9	16	Steel	Zinc Blue
	LAM-NUT-R8-M4-IP	M4	3.6	6.2	7.9	7.9	19.3	Steel	Zinc Blue
	LAM-NUT-R8-M5-IP	M5	3.6	6.2	7.9	7.9	19.3	Steel	Zinc Blue
	LAM-NUT-R8-M6-IP	M6	3.6	6.2	7.9	7.9	19.3	Steel	Zinc Blue
	LAM-NUT-R10-M4	M4	3	5.5	9.9	9.9	19.6	Steel	Zinc Blue
	LAM-NUT-R10-M5	M5	3	5.5	9.9	9.9	19.6	Steel	Zinc Blue
	LAM-NUT-R10-M6	M6	3	5.5	9.9	9.9	19.6	Steel	Zinc Blue
	LAM-NUT-R10-M8	M8	3	5.5	9.9	9.9	19.6	Steel	Zinc Blue

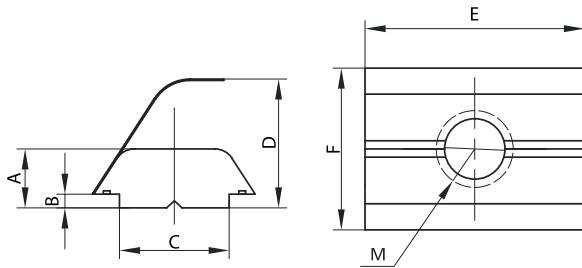


Slot	Item No.	Spec.	Material	Finish
	LAM-NUT-R8-M6-ML	M6	Steel	Zinc Blue
	LAM-NUT-R8-M8-ML	M8	Steel	Zinc Blue

Nut / T Slot Nut

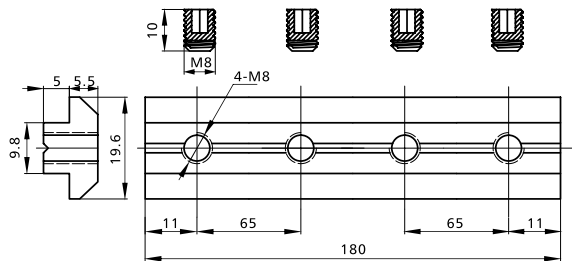


Slot	Item No.	Spec.	A	B	C	D	E	Material	Finish
8	LAM-NUT-URR8-M6	M6	15.9	7.8	1.8	4.2	16	Steel	Zinc Blue
8	LAM-NUT-URR8-M8	M8	15.9	7.8	1.8	4.2	16	Steel	Zinc Blue
10	LAM-NUT-URR10-M6	M6	19.6	9.8	5	5.5	20	Steel	Zinc Blue
10	LAM-NUT-URR10-M8	M8	19.6	9.8	5	5.5	20	Steel	Zinc Blue



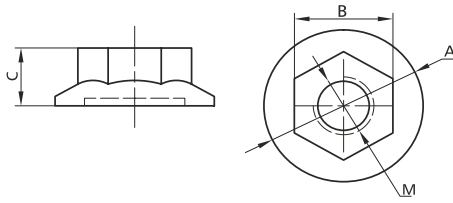
Slot	Item No.	Spec.	A	B	C	D	E	F	Material	Finish
8	LAM-NUT-FR8-M6	M6	4	1	7.9	9.3	16	11.8	Steel	Zinc Blue
8	LAM-NUT-FR8-M8	M8	4	1	7.9	9.3	16	11.8	Steel	Zinc Blue
10	LAM-NUT-FR10-M6	M6	5.3	1.5	9.7	11.8	20	13.8	Steel	Zinc Blue
10	LAM-NUT-FR10-M8	M8	5.3	1.5	9.7	11.8	20	13.8	Steel	Zinc Blue

Nut / Flange Nuts



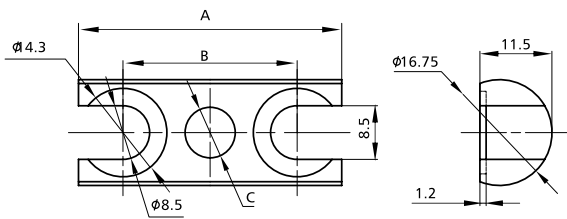
Slot	Item No.	Spec.	Material	Finish
10	LAM-NUT-R1010	4*M8-180 With Screws	Steel	Zinc Blue

Nut / Flange Nuts

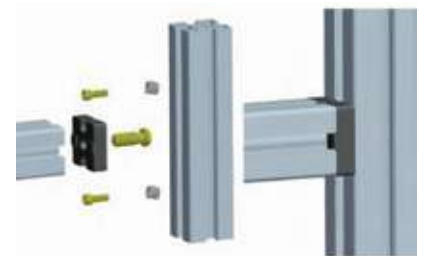
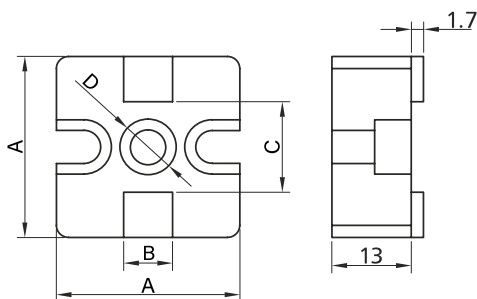


Item No.	Spec.	A	B	C	Material
LAM-NUT-F-M6	M6	Φ13.7	9.8	5.9	Zinc Blue
LAM-NUT-F-M8	M8	Φ17.7	12.75	7.8	Zinc Blue

Alu Profile Accesories

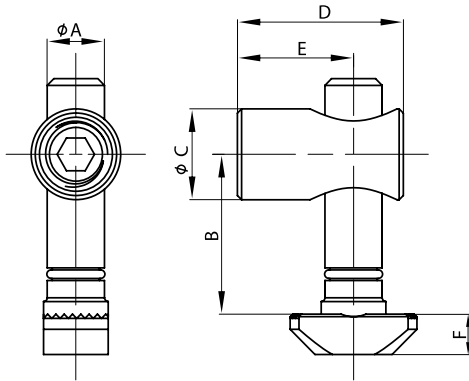


For Profile	Item No.	A	B	C	Material	Finish
40*40	LAM-FL-40	37	24.2	Φ8	Steel	Zinc Blue
45*45	LAM-FL-45	42	28	Φ8	Steel	Zinc Blue

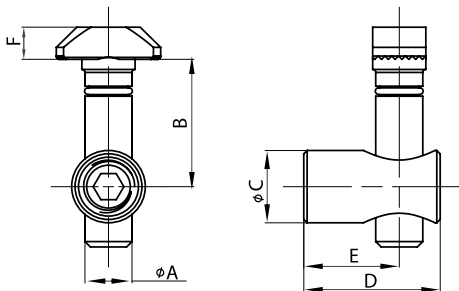


Slot	Item No.	A	B	C	D	Material	Finish	Screw	Spec.
	LAM-FE08-30	30	8	15	Φ5.5	Die-cast Alu.	Dull Polished	Cylinder	M5 x 16
	LAM-FE10-40	40	10	20	Φ12.5	Die-cast Alu.	Dull Polished	Cylinder	M5 x 16
	LAM-FE10-45	45	10	25	Φ6.5	Die-cast Alu.	Dull Polished	Cylinder	M6 x 16

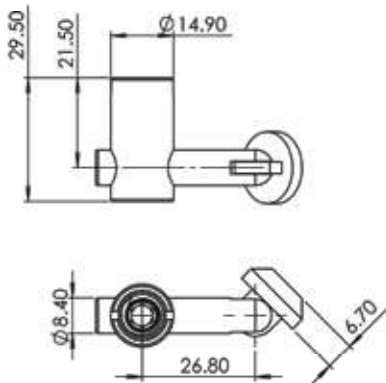
Alu Profile Accesories



Slot	Item No.	For profile	Drilling distance	A	B	C	D	E	F	Material	Finish
8	LAM-QR8-0	30*30	8.44 mm	6.9	19	10.8	20	14	4.8	Steel	Zinc Blue
10	LAM-QR10-0	40*40 45*45	21.70 mm 22.15 mm	9.6	26.6	16.7	28	18	5.4	Steel	Zinc Blue

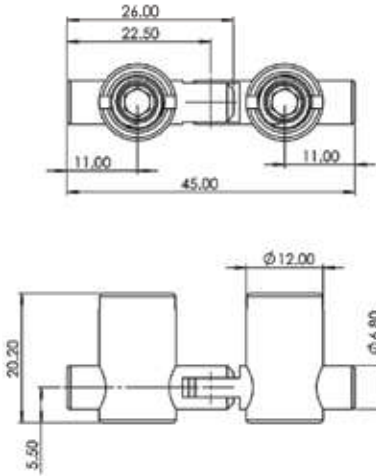


Slot	Item No.	For profile	Drilling distance	A	B	C	D	E	F	Material	Finish
8	LAM-QR8-90	30*30	8.44 mm	6.9	19	10.8	20	14	4.8	Steel	Zinc Blue
10	LAM-QR10-90	40*40 45*45	21.70 mm 22.15 mm	9.6	26.6	16.7	28	18	5.4	Steel	Zinc Blue

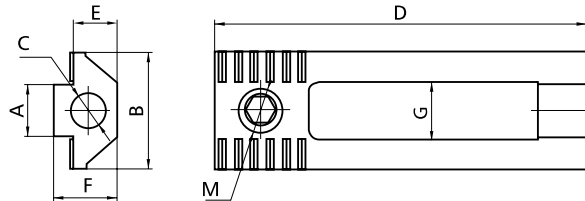


Slot	Item No.	For profile	Drilling distance	Material	Finish
10	LAM-QRV10-90S	R10-4040 R10-4545	25.75 mm	Steel	Zinc Blue

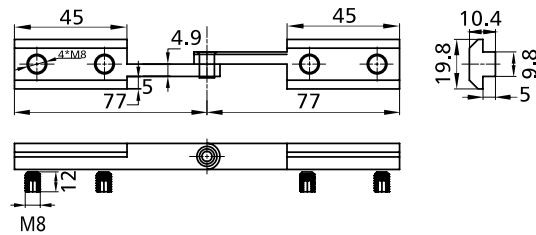
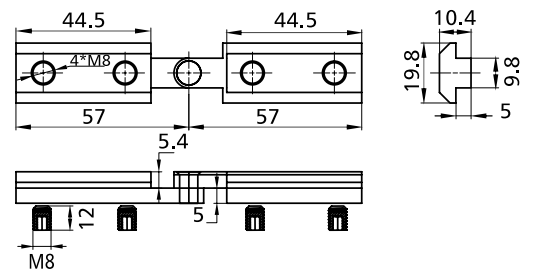
Alu Profile Accesories



Slot	Item No.	For profile	Drilling distance	Material	Finish
	LAM-QRV8-90D	R8-3030	13.75 mm	Steel	Zinc Blue

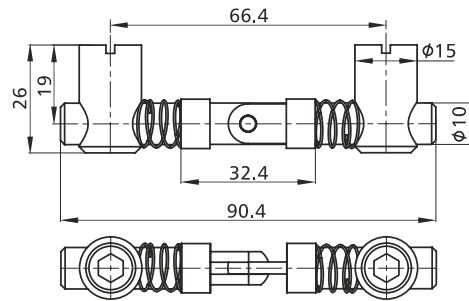
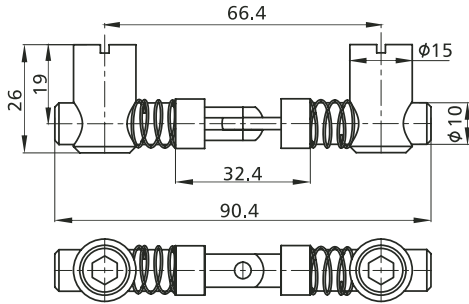


Slot	Item No.	B	C	D	E	F	G	M	Material	Finish	Screw	Nut
	LAM-QR1008	16	Ø5.2	57	5.8	7.5	9	M6	Steel	Zinc Blue	LAM-FRC-M5X20	LAM-NUT-R8-M5
	LAM-QR1010	19.5	Ø6.2	58.5	5	10	10.5	M8	Steel	Zinc Blue	LAM-FRC-M6X20	LAM-NUT-R10-M6

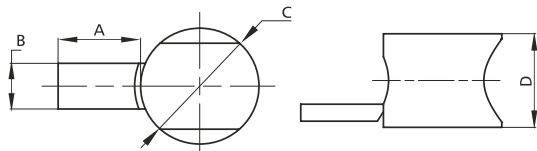



Slot	Item No.	Material	Finish
	LAM-QR1010-LA	Steel	Zinc Blue
	LAM-QR1010-IN	Steel	Zinc Blue

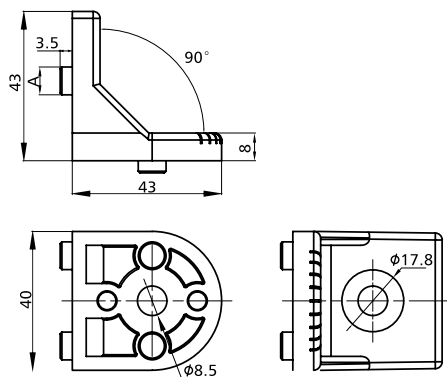
Alu Profile Accesories




Item No.	Material	Finish
LAM-QRV10-90	Steel	Zinc Blue
LAM-QRV10-0	Steel	Zinc Blue

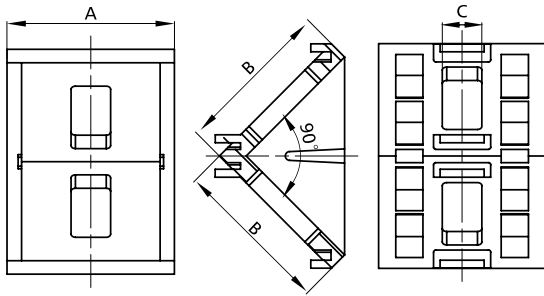


Slot	Item No.	A	B	C	D	Material	Finish
	LAM-3023-R8-IP	13.8	7.8	19.8	16	Die-cast zinc	Zinc Blue



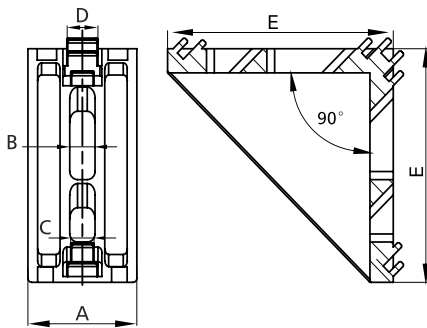
Slot	Item No.	Material	Finish	Screw	Spec.
	LAM-091-A	Die-cast Alu.	Dull Polished	Flat head	M8 x 16

Alu Profile Accesories



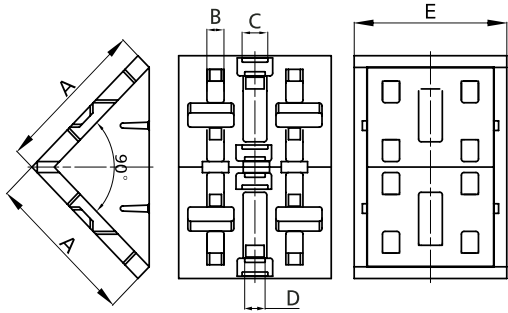
32




Slot	Item No.	A	B	C	Material	Finish
	LAM-3024-20	18	18	4.5	Die-cast Alu.	Dull Polished
Cap	LAM-3024T-20	-	-	-	Nylon	Black
	LAM-3024-30	28	27	6.5	Die-cast Alu.	Dull Polished
Cap	LAM-3024T-30	-	-	-	Nylon	Black
	LAM-3024-40	38	36	9	Die-cast Alu.	Dull Polished
	LAM-3024-40C8	38	36	9	Die-cast Alu.	Dull Polished
Cap	LAM-3024T-40	-	-	-	Nylon	Black
	LAM-3024-45	41.8	42	10.1	Die-cast Alu.	Dull Polished
Cap	LAM-3024T-45	-	-	-	Nylon	Black

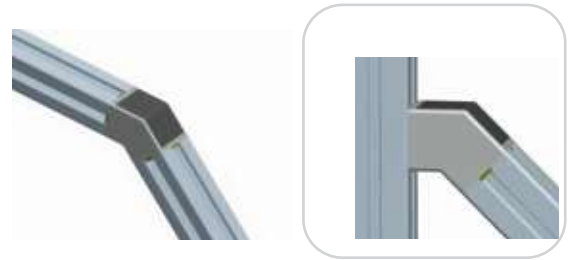
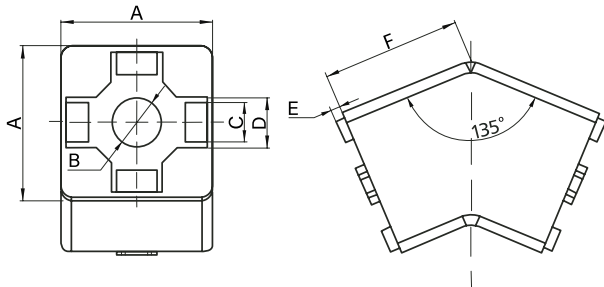


Slot	Item No.	A	B	C	D	E	Material	Finish
	LAM-3024-30D	28	6.5	6	8	58	Die-cast Alu.	Dull Polished
Cap	LAM-3024T-30D	-	-	-	-	-	Nylon	Black
	LAM-3024-40D	36	8.5	8	10	80	Die-cast Alu.	Dull Polished
Cap	LAM-3024T-40D	-	-	-	-	-	Nylon	Black
	LAM-3024-45D	42	9	8	10	88	Die-cast Alu.	Dull Polished
Cap	LAM-3024T-45D	-	-	-	-	-	Nylon	Black

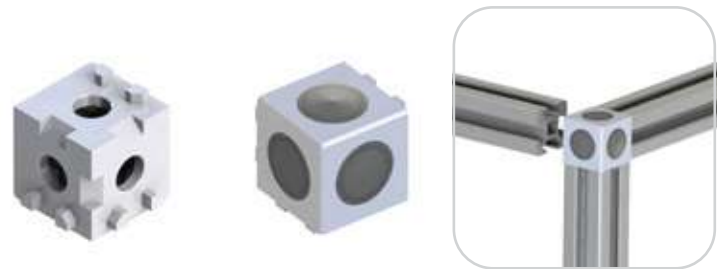
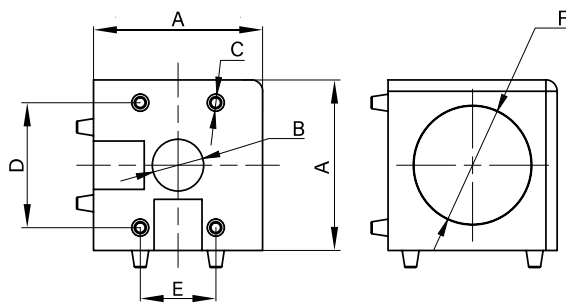
Alu Profile Accesories



Slot	Item No.	A	B	C	D	E	Material	Finish
 8+10	LAM-3024-60	57	6.5	9.8	7.8	58	Die-cast Alu.	Dull Polished
Cap	LAM-3024T-60	-	-	-	-	-	Nylon	Black
 8+10	LAM-3024-80	76	9.2	-	-	74	Die-cast Alu.	Dull Polished
Cap	LAM-3024T-80	-	-	-	-	-	Nylon	Black
 10	LAM-3024-90	86	9	-	-	88	Die-cast Alu.	Dull Polished
Cap	LAM-3024T-90	-	-	-	-	-	Nylon	Black

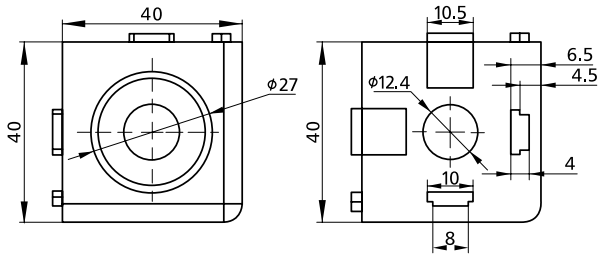


Slot	Item No.	A	B	C	D	E	F	Material	Finish	Screw
6+8	LAM-3023-A2	30	∅8.5	6	8	1.8	27.36	Die-cast Alu.	Dull Polished	S8
8+10	LAM-3023-B2	40	∅13	8	10	1.8	44.58	Die-cast Alu.	Dull Polished	S12
10	LAM-3023-C2	45	∅13	10	-	5	44.58	Die-cast Alu.	Dull Polished	S12

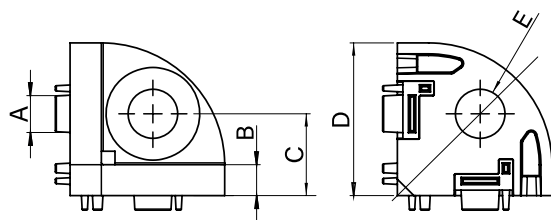


For Profile	Item No.	A	B	C	D	E	F	Material	Finish	Screw	Spec.
20*20	LAM-WB210-A	20	∅7.1	∅3	12	-	∅13.4	Die-cast Alu.	Dull Polished	Flat head	M6 x 16
30*30	LAM-WB310-A	30	∅9.1	∅3	22	13.4	∅21	Die-cast Alu.	Dull Polished	Flat head	M8 x 30
45*45	LAM-WB450-A	45	∅13	∅4	29	16	∅26.5	Die-cast Alu.	Dull Polished	Flat head	M12 x 30

Alu Profile Accesories

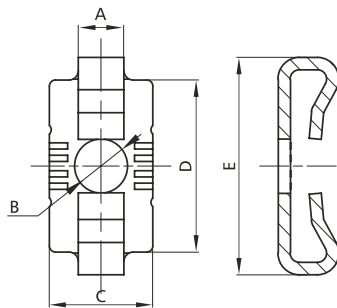


For Profile	Item No.	Material	Finish	Screw	Spec.
40*40	LAM-WB400-A	Die-cast Zinc	Alu Color	Flat head	M12x30



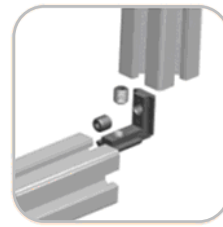
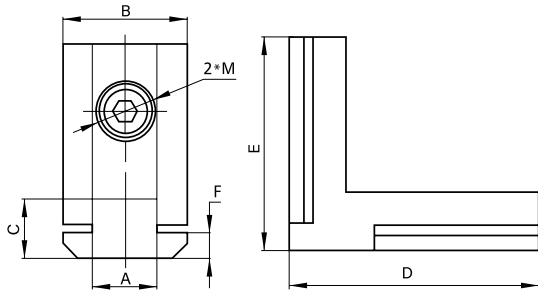
Slot	For Profile	Item No.	M	A	B	C	D	E	Material	Finish	Screw	Spec.
	30*30	* LAM-WB30R90-A2	M8	8	5	15	28	$\phi 9$	Die-Cast Zinc	Alu Color	Flat head	M8x30
	45*45	LAM-WB45R90-A	M12	10	8.5	22.5	42	$\phi 13.5$	Die-Cast Zinc	Alu Color	Flat head	M12x30
-	45*45	LAM-WB45R90T	-	-	-	-	-	-	Nylon	Black	-	-

* Cap included

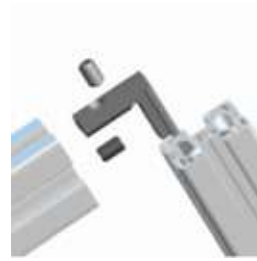
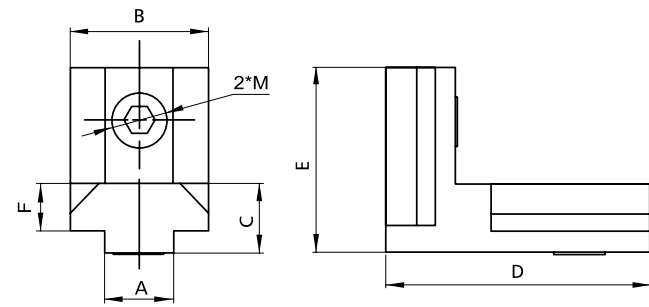


Slot	Item No.	A	B	C	D	E	Material	Finish
	LAM3023-R8-30-IP	8	$\phi 8.5$	15	21	28.7	Steel	Zinc Blue
	LAM3023-R8-40-IP	7.7	$\phi 8.7$	17	27.7	35	Steel	Zinc Blue

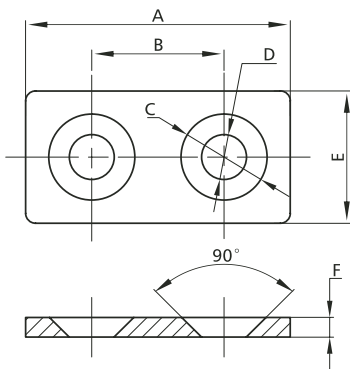
Alu Profile Accesories



Slot	Item No.	A	B	C	D	E	F	2*M	Material	Finish
6	LAM-3023-DI-06	5.8	11	4.5	21	21	3	M5	Die-cast Zinc	Nickel Plated
8	LAM-3023-DI-08	7.8	15.7	7.8	30	21	5.5	M6	Die-cast Zinc	Nickel Plated
10	LAM-3023-DI	9.8	19	8.7	38	32	3.8	M8	Die-cast Zinc	Nickel Plated

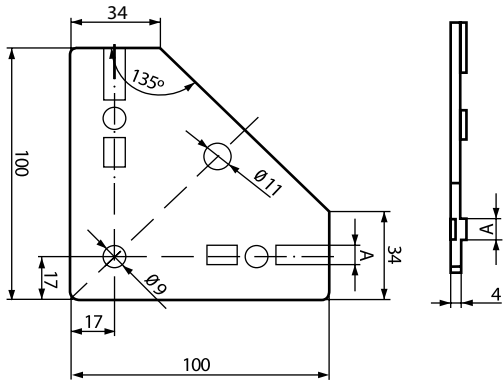


Slot	Item No.	A	B	C	D	E	F	2*M	Material	Finish
10	LAM-3023-DI-10	9.8	19	8.7	38	32	3.8	M8	Die-cast zinc	Nickel Plated

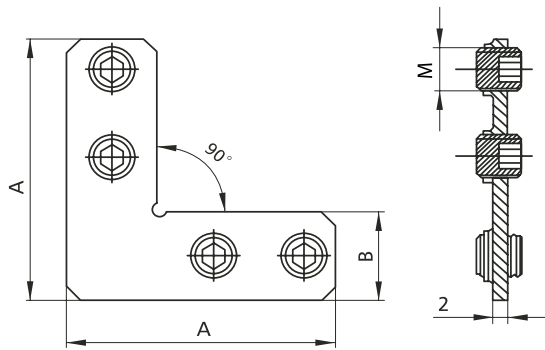




Item No.	A	B	C	D	E	F	Material	Finish
LAM-3022-20	40	20	Φ11.5	Φ5.5	20	3	Steel	Black Powder Coated
LAM-3022-30	60	30	Φ13	Φ6.8	30	3	Steel	Black Powder Coated
LAM-3022-40	80	40	Φ18	Φ9.2	40	4	Steel	Black Powder Coated
LAM-3022-45	90	45	Φ19.2	Φ9.2	45	5	Steel	Black Powder Coated

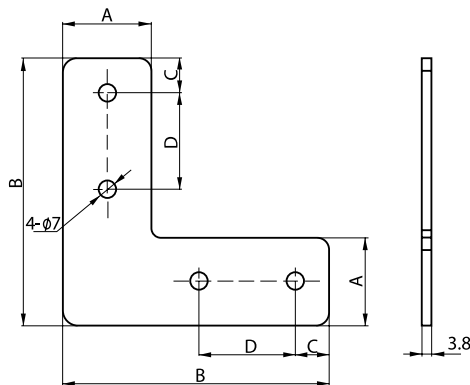
Alu Profile Accesories



Slot	Item No.	Material	Finish
	LAM-3023-EE8	Steel	Zinc Blue
	LAM-3023-EE	Steel	Zinc Blue

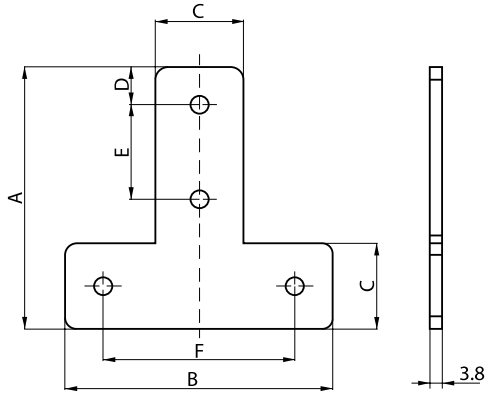


Slot	Item No.	A	B	M	Material	Finish
	LAM-3023-DE8	46	16	M6	Steel	Zinc Blue
	LAM-3023-DE10	60	20	M8	Steel	Zinc Blue

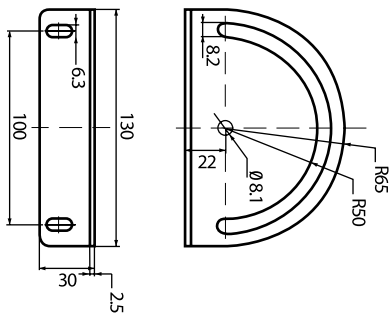


Item No.	For Profile	A	B	C	D	Material	Finish
LAM-3023EL-30	30*30	26.2	1001	53	5	Al Alloy	Sandblast Oxidation
LAM-3023EL-40	40*40	36.2	1101	54	0	Al Alloy	Sandblast Oxidation

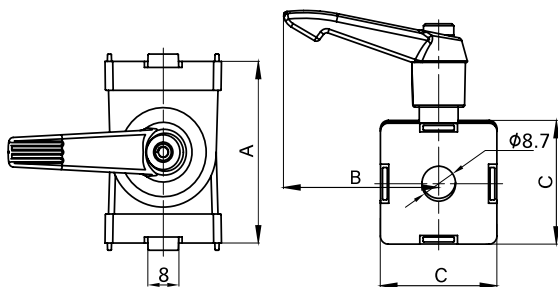
Alu Profile Accesories




Item No.	For Profile	A	B	C	D	E	F	Material	Finish
LAM-3023ET-30	30*30	97	90	26	15	35	60	Al Alloy	Sandblast Oxidation
LAM-3023ET-40	40*40	1101	10	36	16	40	80	Al Alloy	Sandblast Oxidation

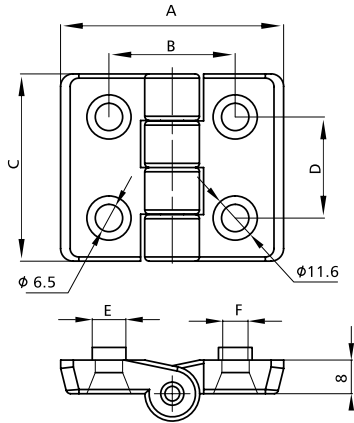


Item No.	Material	Finish	Screw	Spec.
LAM-3023A-01	Steel	Zinc Blue	Button head	M8x10

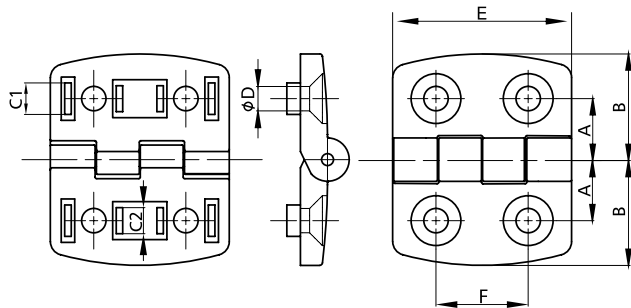


Slot	Item No.	Spec.	A	B	C	Material	Finish
	LAM-3005-30B	30*30 W/Lock lever	45.1	39.9	30	Die-cast Zinc	Alu Color
8+10	LAM-3005-40B	40*40 W/lock lever	60.2	30.1	40	Die-cast Zinc	Alu Color
8+10	LAM-3005-45B	45*45 W/lock lever	60	65.19	45	Die-cast Zinc	Alu Color

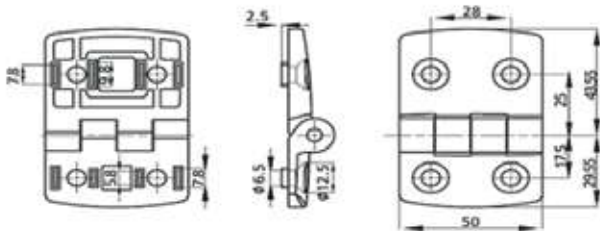
Alu Profile Accesories



Slot	Item No.	Spec.	A	B	C	D	E	F	Material	Finish	Screw	Spec.
6+8	LAM-SC-30	30*30	53	30	44.5	24	7.9	5.9	Nylon	Black	Flat head	M6 x 10
8+10	LAM-SC-40	40*40	62	40.6	49.5	30	9.9	7.9	Nylon	Black	Flat head	M6 x 16
8+10	LAM-SC-45	45*45	71	45	49.5	30	9.9	7.9	Nylon	Black	Flat head	M6 x 16

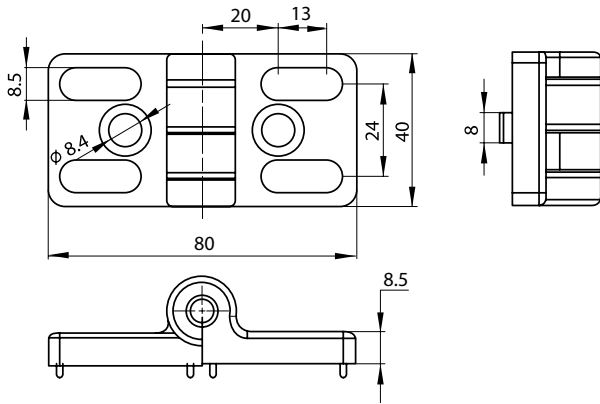



Slot	Item No.	Spec.	A	B	C1	C2	D	E	F	Material	Finish	Screw	Spec.
5+6	LAM-SCHM20	20*20	11.25	19.5	5.8	4.8	4.5	33	17	Die-cast Zinc	Alu Color	Flat head	M4 x 10
6+8	LAM-SCHM30	30*30	17.5	29.5	7.8	5.8	6.5	50	28	Die-Cast Alu	Alu Color	Flat head	M6 x 10
8+10	LAM-SCHM40	40*40	22.5	35.5	9.8	7.8	6.5	50	28	Die-Cast Alu	Alu Color	Flat head	M6 x 16
8+10	LAM-SCHM45	45*45	25	43.5	9.8	7.8	6.5	50	28	Die-Cast Alu	Alu Color	Flat head	M6 x 16

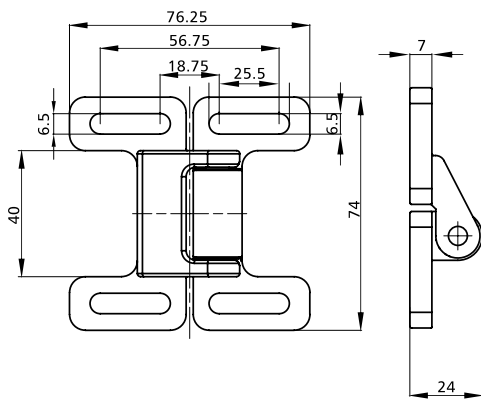


Slot	Item No.	Spec.	Material	Finish	Screw	Spec.
6+8+10	LAM-SCHM45-30	30/45	Die-cast Zinc	Alu Color	Flat head	M6 x 10

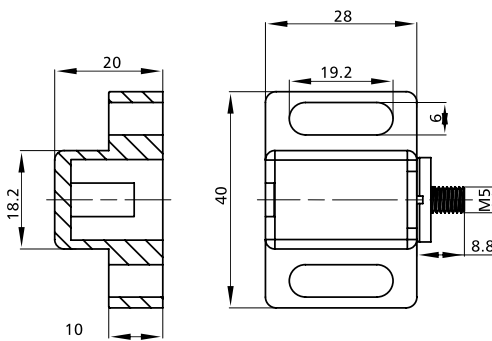
Alu Profile Accesories



Slot	Item No.	For Profile	Material	Finish
	LAM-SCHM40-IP	40/40	Die-cast zinc	Black Powder Coated

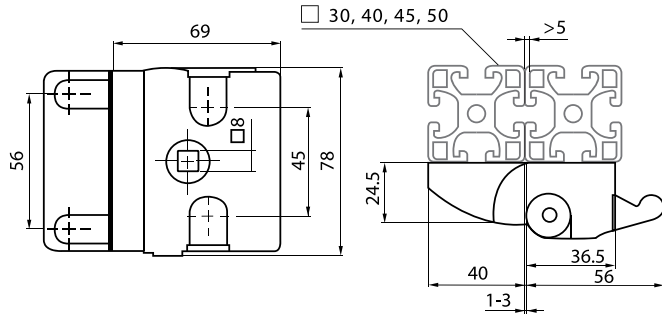


Item No.	Material	Finish	Screw	Spec.
LAM-TSPA-0100	Nylon	Black	Button head	M6 x 16

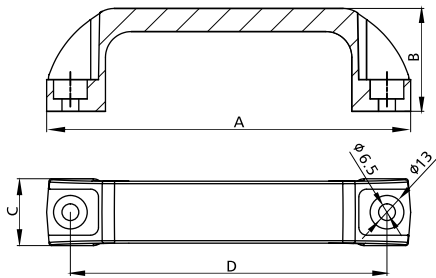


Item No.	Material	Finish	Screw	Spec.
LAM-TSIM-0200	Nylon+Steel	Black	Button head	M6 x 16

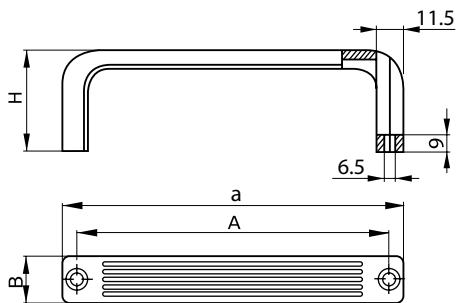
Alu Profile Accesories



Item No.	Lock	Weight	Material	Finish	Screw	Spec.
LAM-0957-A	Universal	235.5	Die-Cast Aluminum	Black Powder coated	Cylinder	M6 x 16

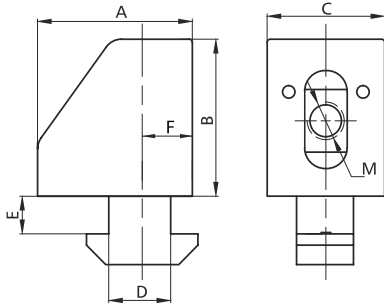


Item No.	A	B	C	D	Material	Finish	Screw	Spec.
LAM-3034A	141	40	26	122	Nylon	Black	Cylinder	M6 x 16

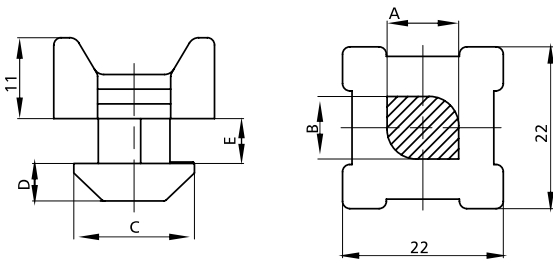


Item No.	Spec.	a	A	B	H	Material	Finish	Screw
LAM-3034HD	M6	133	118	26	50	Nylon	Black	LAM-FRC-M6X16

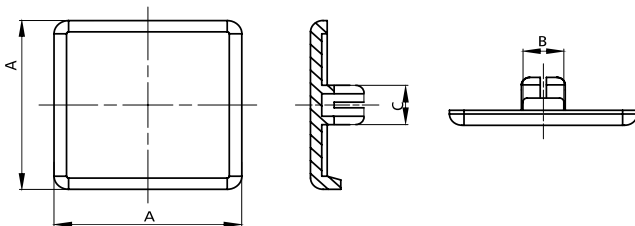
Alu Profile Accesories



Slot	Item No.	A	B	C	D	E	F	M	Material	Finish
	LAM-3026-B303	25	25	19	8	2.3	7	M6	Nylon	Black
	LAM-3026-B	25	25	19	10	6	8	M6	Nylon	Black



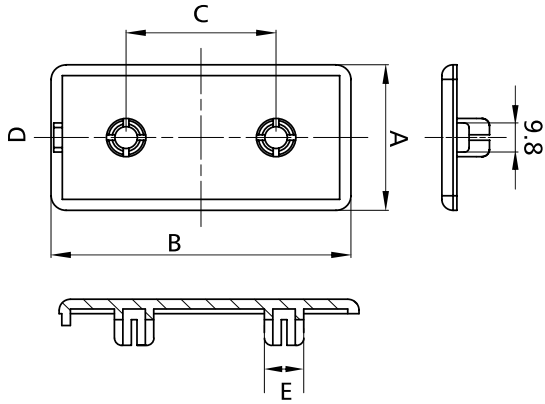
Slot	Item No.	A	B	C	D	E	Material	Finish
	LAM-R10-KBBPA	9.8	8.5	17	5	6	Nylon	Black
	LAM-R8-KBB302	8	6.8	16	5	2.3	Nylon	Black



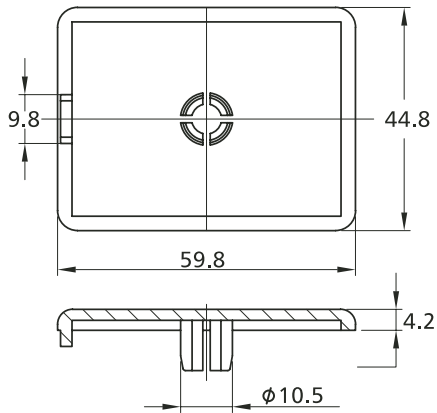
Slot	Item No.	Spec.	A	B	C	Material	Finish	
	LAM-3027-20	20*20	20	6	Φ5.4	Nylon	Black / Gray	*LAM-3027-20AG
	LAM-3027-30	30*30	30	8	Φ8.2	Nylon	Black / Gray	*LAM-3027-30AG
	LAM-3027-40	40*40	40	10	Φ10.5	Nylon	Black / Gray	*LAM-3027-40AG
	LAM-3027-40-IP	40*40	40	8	Φ7.2	Nylon	Black / Gray	*LAM-3027-40-IPAG
	LAM-3027-45	45*45	45	10	Φ10.5	Nylon	Black / Gray	*LAM-3027-45AG
	LAM-3027-60	60*60	60	9.8	Φ10.5	Nylon	Black / Gray	*LAM-3027-60AG

*Gray code

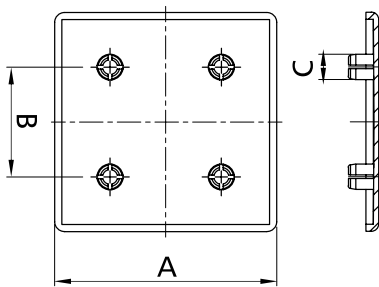
Alu Profile Accesories



Slot	Item No.	Spec.	A	B	C	D	E	Material	Finish
	LAM-3027-30D	30*60	30	60	30	8	Φ7.2	Nylon	Black
	LAM-3027-40D-IP	40*80	40	80	40	8	Φ7.2	Nylon	Black
	LAM-3027-40D	40*80	40	80	40	9.8	Φ10.5	Nylon	Black
	LAM-3027-45D	45*90	45	90	45	9.8	Φ10.5	Nylon	Black

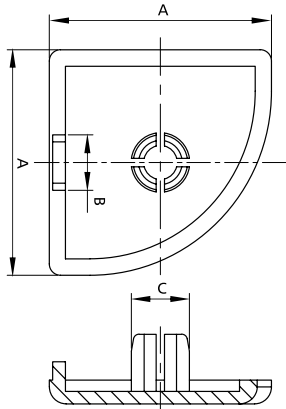


Slot	Item No.	Spec.	Material	Finish
	LAM-3027-4560	45*60	Nylon	Black

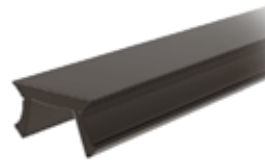
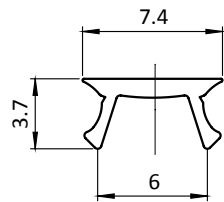


Slot	Item No.	Spec.	A	B	C	Material	Finish
	LAM-3027-80-IP	80*80	80	40	Φ7.2	Nylon	Black
	LAM-3027-80	80*80	80	40	Φ10.5	Nylon	Black
	LAM-3027-90	90*90	90	45	Φ10.5	Nylon	Black

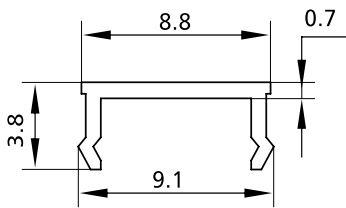
Alu Profile Accesories



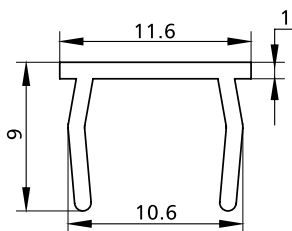
Slot	Item No.	Spec.	A	B	C	Material	Finish
	LAM-3027-40R90	40R	40	9.8	Φ10.5	Nylon	Black
	LAM-3027-45R90	45R	45	9.8	Φ10.5	Nylon	Black



Slot	Item No.	Material	Finish	Weight (G)
	LAM-R6-090	PP	Black	11 g/m

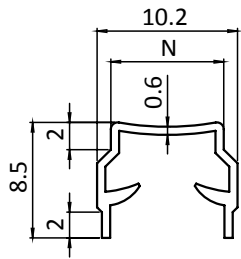



Slot	Item No.	Spec.	Material	Finish	Weight (G)
	LAM-RG8-090	L=2000	PP	Gray	7.85g/m
	LAM-R8-090	L=2000	PP	Black	7.85g/m

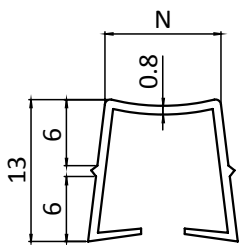



Slot	Item No.	Spec.	Material	Finish	Weight (G)
	LAM-R10-090	L=2000	PVC	Black	44g/m
	LAM-RA10-090	L=2000	PVC	Yellow	44g/m
	LAM-RG10-090	L=2000	PVC	Gray	44g/m
	LAM-RN10-090	L=2000	PVC	Orange	44g/m

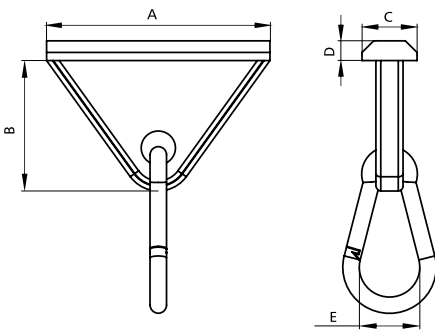
Alu Profile Accesories



Slot	Item No.	Material	Finish	Weight (G)
 8	LAM-R8-040	Plastic PP + TPE	Black	25 g/m

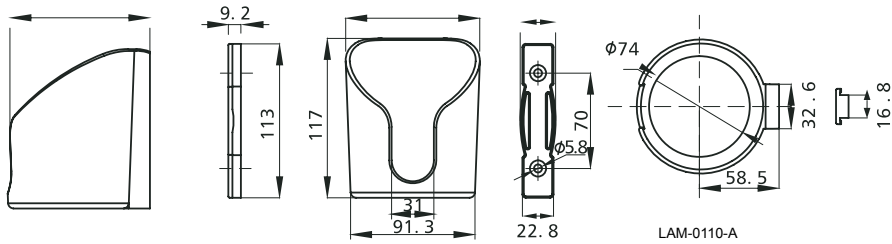


Slot	Item No.	Material	Finish	Weight (G)
 10	LAM-R10-040	Plastic PP + TPE	Black	34 g/m

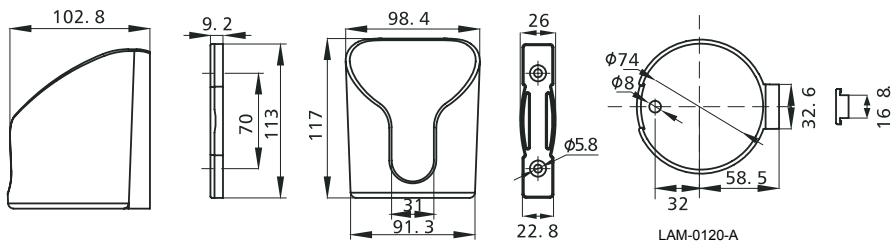


Slot	Item No.	A	B	C	D	E	Material	Loading capacity (Kg)
8+10	LAM-0100-A	65	38.5	16	5.8	Φ17	ABS+Hook:Steel	100

Alu Profile Accesories



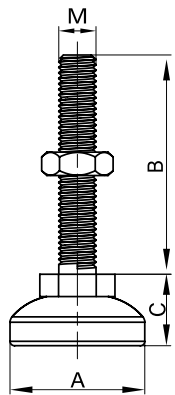
LAM-0110-A



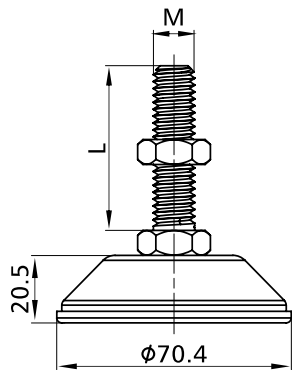
LAM-0120-A



Item No.	Material	Finish	Screw	Spec.
LAM-0110-A	Nylon	Black	Flat head	M6 x 16
LAM-0120-A	Nylon	Black	Flat head	M6 x 16

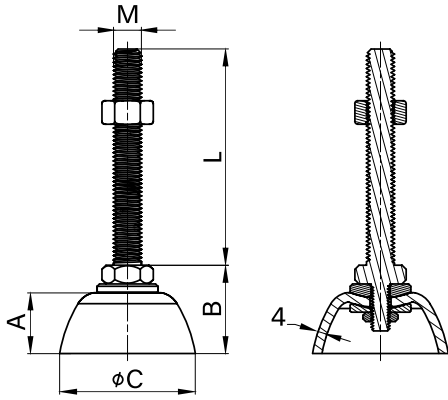


Item No.	A	B	C	M	Rope step	Base Material	Bolt Material	Loading capacity (Kg)
LAM-3025B-M6	φ19	40	16.9	M6	1.0	Nylon	Steel Zinc Blue	20
LAM-3025B-M8	φ29	50	16.3	M8	1.25	Nylon	Steel Zinc Blue	30

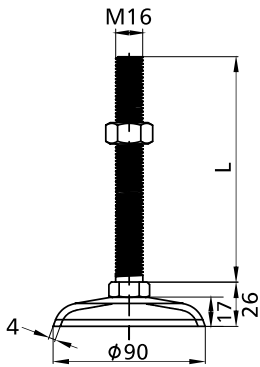


Item No.	M	L	Base Material	Bolt Material	Loading capacity (Kg)
LAM-3025B-2	M12	70	Steel Base with Rubber	Steel,Zinc Blue	90

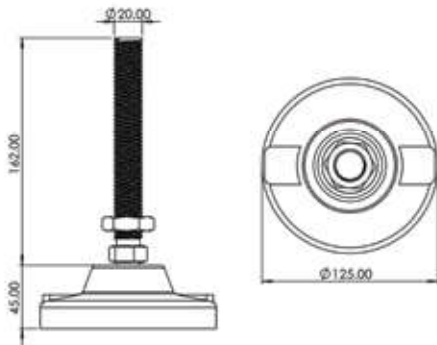
Alu Profile Accesories



Item No.	M	L	A	B	C	Rope step	Base Material	Bolt Material	Loading capacity (Kg)
LAM-3025HBC-M12	M12	52	17	29	φ 45	1.75	Heavy Steel,Zinc Blue	Steel,Zinc Blue	90
LAM-3025HB-M12	M12	70	26	38	φ 58	1.75	Heavy Steel,Zinc Blue	Steel,Zinc Blue	90
LAM-3025HBC-M1213	M12	130	26	38	φ 58	1.75	Heavy Steel,Zinc Blue	Steel,Zinc Blue	77

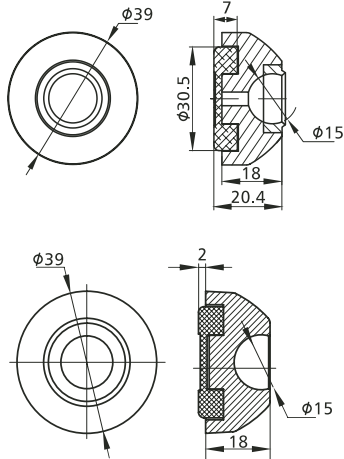


Item No.	L	Base Material	Bolt Material	Loading capacity (Kg)	Rope step
LAM-3025HB-M1613	130	Heavy Steel,Zinc Blue	Steel,Zinc Blue	1450	2.0

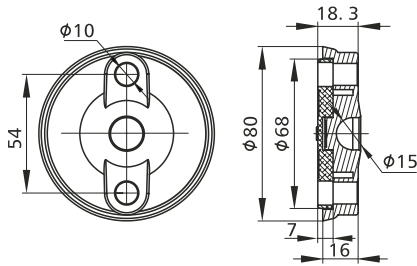


Item No.	M	Base Material	Bolt Material	Loading capacity (Kg)
LAM-3025-M20	M20	Nylon	Steel Zinc Blue	250

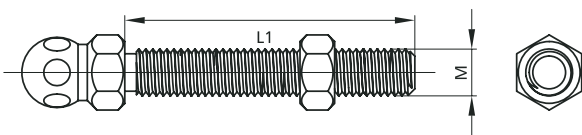
Alu Profile Accesories



Item No.	Spec.	Base	Anti Slip Mat	ScrewSpec.	Rope step
LAM-3025-NS39	Φ39	Die-cast Zinc	Rubber Plastic	M12*55	1.75
LAM-3025-NP39	Φ39	Nylon	Rubber Plastic	M12*55	1.75

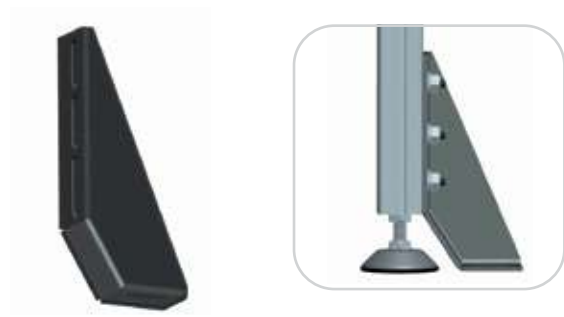
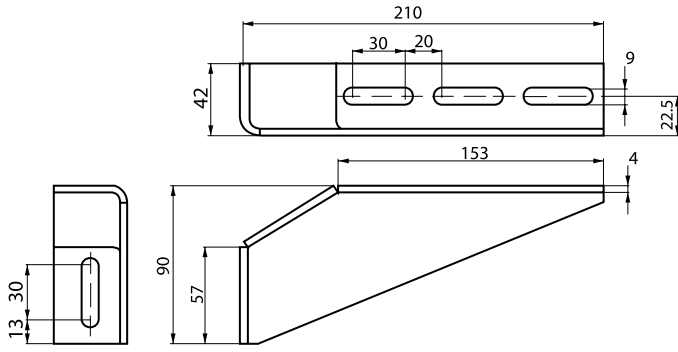


Item No.	Spec.	Base	Anti Slip Mat
LAM-3025-N80	Φ80	Nylon	Rubber Plastic

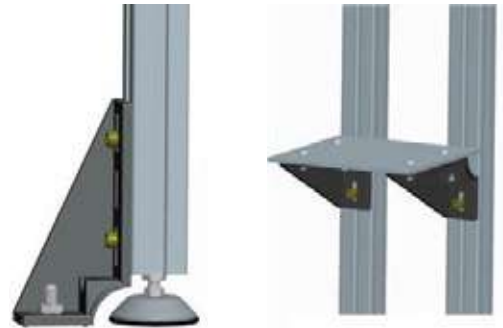
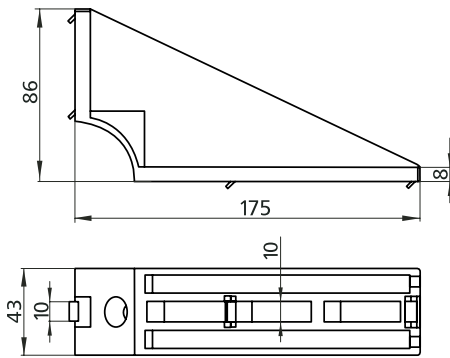


Item No.	M	L1	L2	Spec.	Rope step	Material	Finish	Loading capacity (Kg)
LAM-3025-K0835	M8	35	14	Φ80	1.75	Steel / Nylon	Zinc Blue	100
LAM-3025-K1255	M12	55	14	Φ80	1.75	Steel / Nylon	Zinc Blue	100
LAM-3025-K12100	M12	100	14	Φ80	1.75	Steel / Nylon	Zinc Blue	100
LAM-3025-K1470	M14	70	14	Φ80	1.75	Steel / Nylon	Zinc Blue	100
LAM-3025-K16150	M16	150	17	Φ80	2.0	Steel / Nylon	Zinc Blue	100

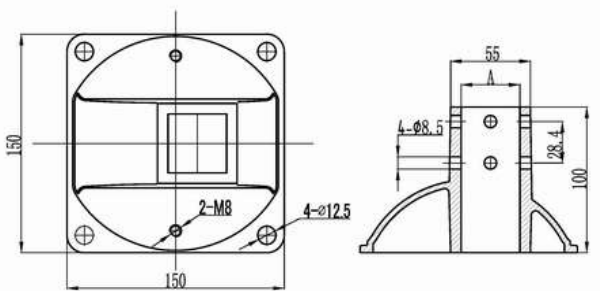
Alu Profile Accesories



Item No.	Material	Finish
LAM-A70-01	Steel	Alu Color Painting

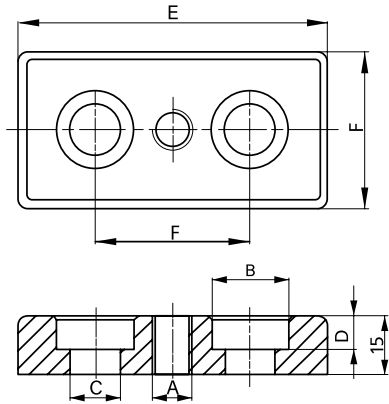


Slot	Item No.	Material	Finish
10	LAM-A70-02	Die-cast Alu.	Dull Polished

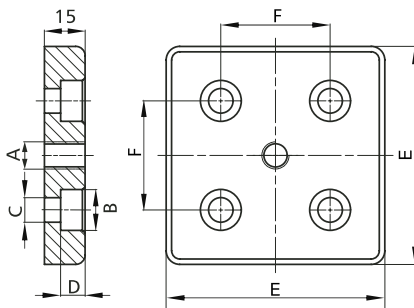


For Profile	Item No.	A	Material	Finish
40*40	LAM-A70-40	40	Die-Cast Zinc	Black Painting
45*45	LAM-A70-45	45	Die-Cast Zinc	Black Painting

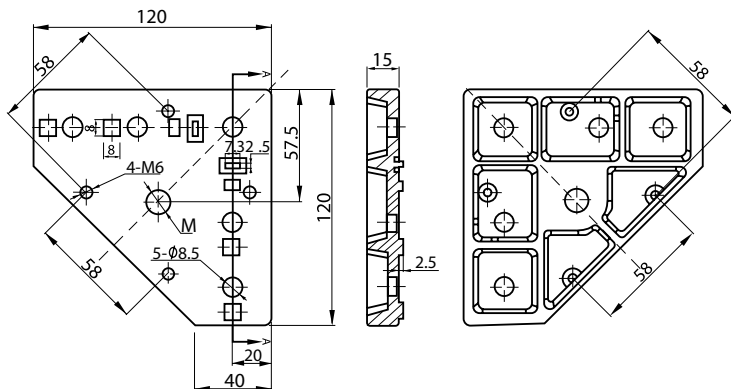
Alu Profile Accesories



Item No.	A	B	C	D	E	F	Material	Finish
LAM-TA12-4080	M12	Φ20	Φ13(M12)	8.5	80	40	Die-Cast Alu	Dull Polish
LAM-TA12-4590	M12	Φ20	Φ13(M12)	8.5	90	45	Die-Cast Alu	Dull Polish

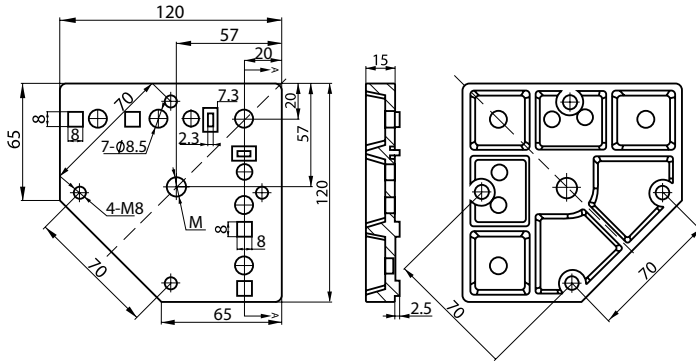


Item No.	A	B	C	D	E	F	Material	Finish
LAM-TA12-8080	M12	Φ20	Φ13	8.5	80	40	Die-Cast Alu	Frosted
LAM-TA12-9090	M12	Φ20	Φ13	8.5	90	45	Die-Cast Alu	Frosted

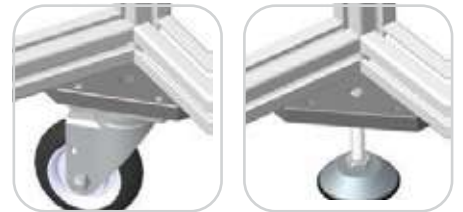
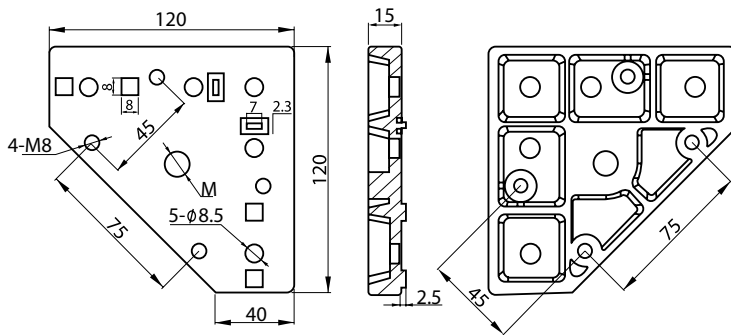


Item No.	M	For Profile	Material	Finish	Attachment
LAM-TAG58	12	40*40	Al Alloy	Grey Painting	LAM-GDA-60F

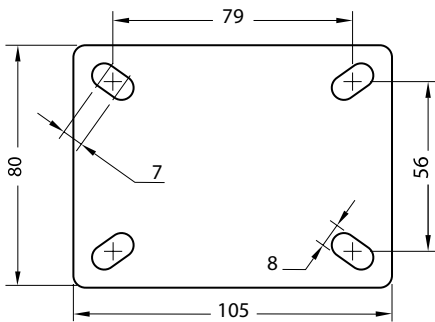
Alu Profile Accesories



Item No.	M	For Profile	Material	Finish	Attachment
LAM-TAG70	12	40*40	Al Alloy	Grey Painting	LAM-GDA-80F/100F



Item No.	M	For Profile	Material	Finish	Attachment
LAM-TAG75	12	40*40	Al Alloy	Grey Painting	PR-RC-40



LAM-RSO-30










LAM-RSPB-30








Item No.								
	Central gap	Brake						Kg
LAM-RSO-30	3"	75mm	32mm	103mm	-	12.5mm	-	100
LAM-RSOB-30	3"	75mm	32mm	103mm	-	12.5mm	98mm	100
LAM-RSP-30	3"	75mm	32mm	103mm	105*56mm	-	-	100
LAM-RSPB-30	3"	75mm	32mm	103mm	105*56mm	-	98mm	100

Alu Profile Accesories

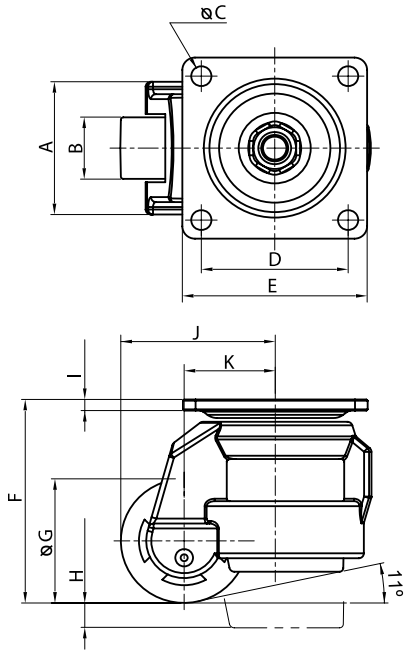


Item No.								Screw	Material
LAM-RC-30	3 "	75mm	32mm	106mm	73*45mm	-	110	M12*30	Steel plate Wheels: PP / PU
LAM-RCB-30	3 "	75mm	32mm	106mm	73*45mm	98mm	110	M12*30	

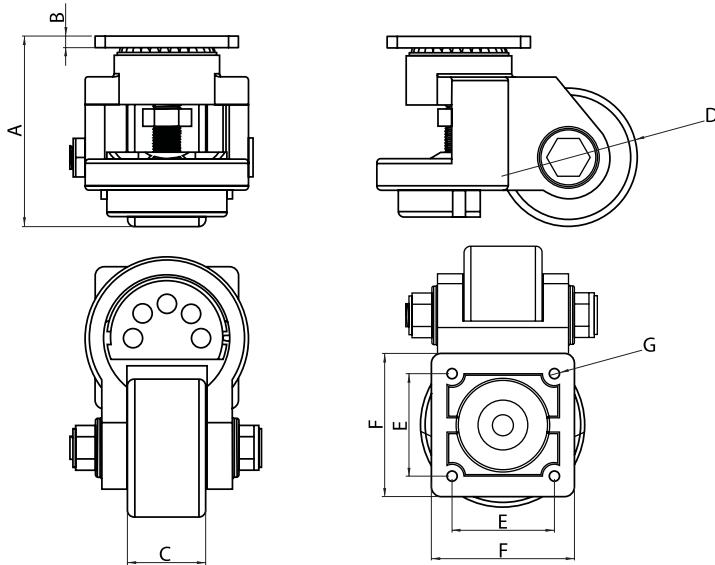


Item No.								Attachment	Material
PR-RC-40F	4 "	100mm	32mm	133mm	73*45mm	-	125	LAM-TAG75	Steel plate Wheels: PP / PU
PR-RC-40G	4 "	100mm	32mm	133mm	73*45mm	-	125	LAM-TAG75	
PR-RC-40GB	4 "	100mm	32mm	133mm	73*45mm	98mm	125	LAM-TAG75	

Alu Profile Accesories

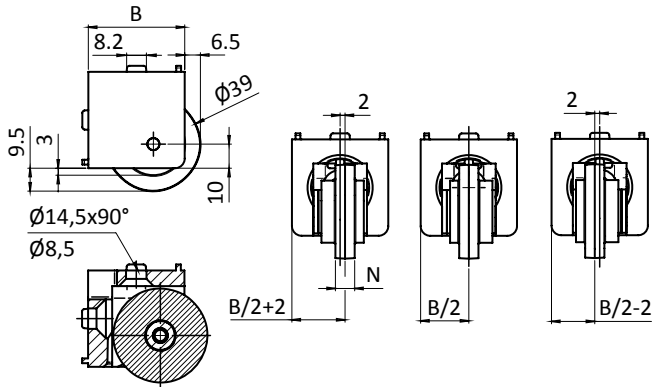


Item No.	A	B	C	D	E	F	G	H	I	J	K	Kg	Material
GD60	53.5 mm	25 mm	7 mm	58 mm	73 mm	82 mm	50 mm	10 mm	4.5 mm	61 mm	36 mm	280 kg	Pressed steel plate Aluminum die-cast bracket Nylon wheels
GD80	65.5 mm	28 mm	9 mm	70 mm	90 mm	103 mm	63 mm	15 mm	5 mm	77.5 mm	46 mm	550 kg	
GD100	67 mm	30 mm	11 mm	70 mm	95 mm	120 mm	75 mm	12 mm	6 mm	90.5 mm	53 mm	800 kg	

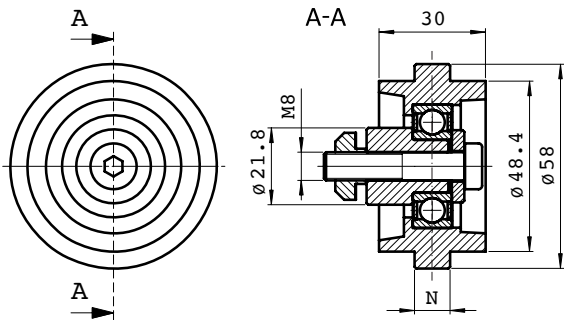



Item No.	A	B	C	D	E	F	G	Kg	Attachment	Color	Material
LAM-GDA-40F	75 mm	4 mm	18 mm	42 mm	42 mm	64 mm	6.5 mm	50 kg	-	Black	Steel green plate Wheels: Black nylon Black die-cast alu+cushioning base
LAM-GDA-60F	93 mm	10 mm	25 mm	52 mm	58 mm	73 mm	7 mm	250 kg	LAM-TAG58	Black	
LAM-GDA-80F	120 mm	15 mm	30 mm	63 mm	70 mm	90 mm	8.5 mm	500 kg	LAM-TAG70	Black	
LAM-GDA-100F	135 mm	12 mm	30 mm	73 mm	70 mm	95 mm	10.5 mm	750 kg	LAM-TAG70	Black	
LAM-GDA-150F	133.5 mm	8 mm	55 mm	97 mm	72 mm	100.5 mm	12.5 mm	1500 kg	-	Blue	

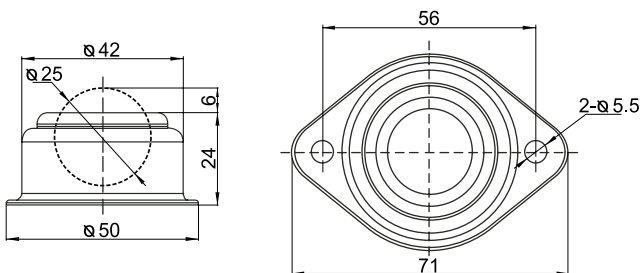
Alu Profile Accesories



Slot	Item No.	B [mm]	N	Weight [g]	Material	Finish
8 - 10	LAM-RS45	45	10	230	Die-cast Alu. / Nylon	Black

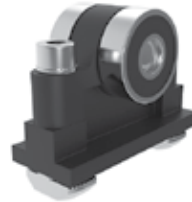
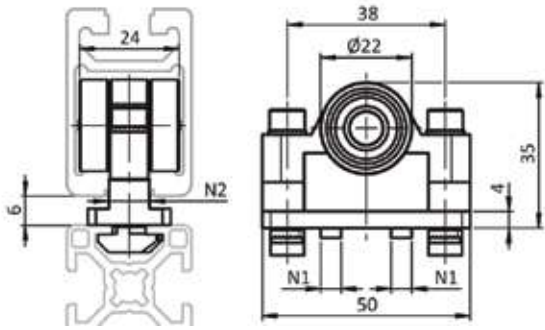


Slot	Item No.	Material	Finish	Weight (G)
 10	LAM-R48B	Nylon PA	Black	154.5 g/m

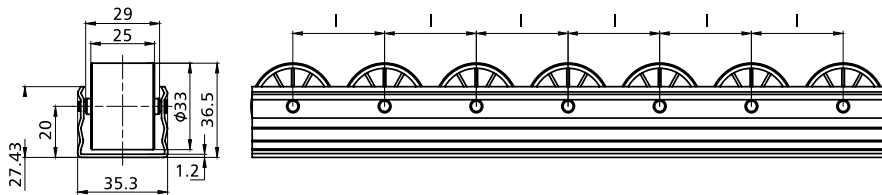


Item No.	Material	Max. Load
LAM-RS25S	Steel,Zinc Blue	30 Kg

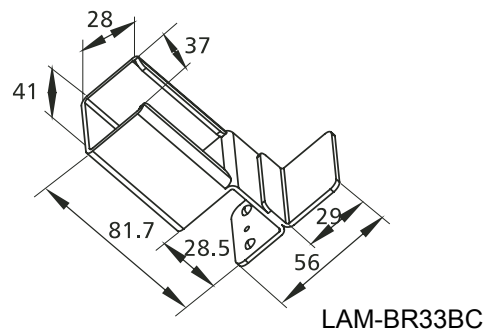
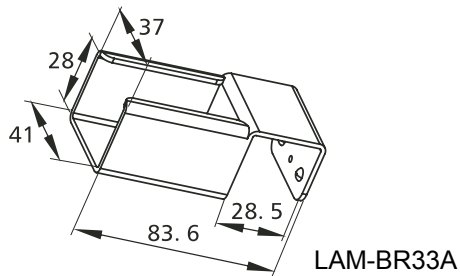
Alu Profile Accesories



Item No.	N1	N2	Profile	Fmax	Material	Finish
LAM-RS0100	8	10		150	Trolley: Plastic PA Bearing: Steel Cylinder pin: Stainless steel Mounting material: Steel	Trolley: Black Bearing: Chrome plated Cylinder pin: Plain Mounting material: Zinc plated

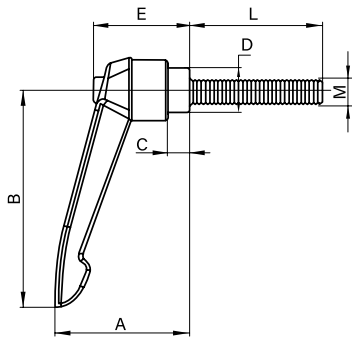


Item No.	Material	Rack Material	Load-bearing	Weight	Standard Lenght
LAM-R33PP	Black PP	Zinc Plated Steel	10 kg/axis	1.05 kg/m	4 meters



Item No.	Material	Finish
LAM-BR33A	Cold-rolled Steel Thk.2.0mm	Zinc Blue
LAM-BR33BC	Cold-rolled Steel Thk.2.0mm	Zinc Blue

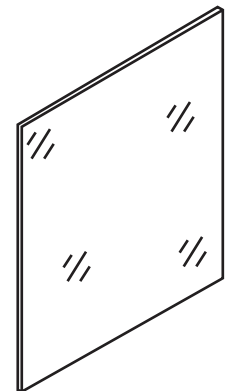
Alu Profile Accessories



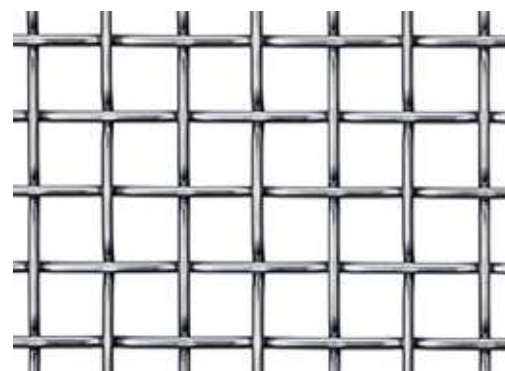
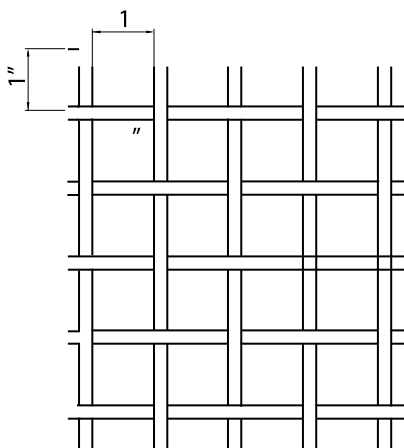
Item No.	M	L	A	B	C	D	E	Material	Finish
LAM-LVR-M5-16	M5	16	37	50	8	Φ10	28.5	Aluminum alloy	Black painting
LAM-LVR-M6-16	M6	16	37	50	8	Φ10	28.5	Aluminum alloy	Black painting
LAM-LVR-M8-16	M8	16	43	64	11	Φ12.5	33.5	Aluminum alloy	Black painting
LAM-LVR-M8-40	M8	40	43	64	11	Φ12.5	33.5	Aluminum alloy	Black painting

Polycarbonate Panels

Item No.	Thickness	Color	Size	Weight
LAM-001-A	3 mm	Clear	1200 x 2400 mm	3.6 kg/m ²
LAM-002-A	6 mm	Clear	1200 x 2400 mm	7.2 kg/m ²
LAM-003-A	9.5 mm	Clear	1200 x 2400 mm	11.4 kg/m ²



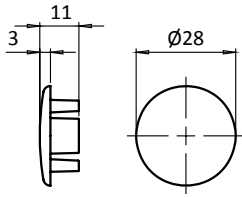
Wire Mesh Panel



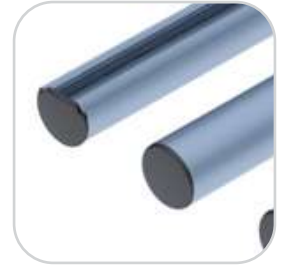
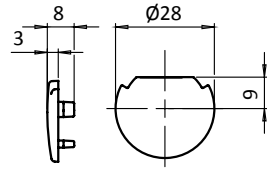
Item No.	Mesh Size	Wire Diameter (mm)	After coating (mm)	Material	Color	Panel Length (m)
LAM-1212B	1/2" x 1/2"	2	2.7	PVC Coated / Galvanized Inside wire	Black	1.22 x 2.44
LAM-2525A	1" x 1"	2.5	3.2	PVC Coated / Galvanized Inside wire	Yellow	1.22 x 2.44
LAM-2525B	1" x 1"	2.5	3.2	PVC Coated / Galvanized Inside wire	Black	1.22 x 2.44

Round Profile D28

(A) LAM-3027-D28

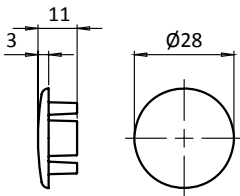


(B) LAM-3027-RD28

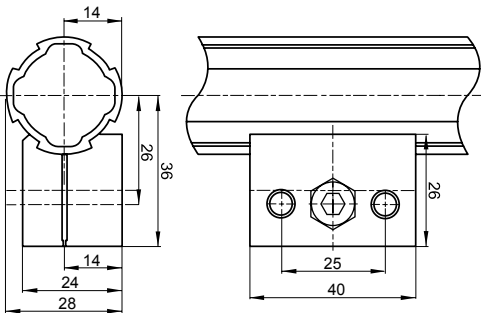


56

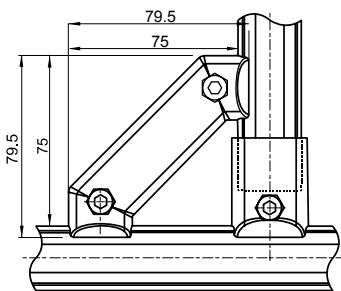
Item No.	Spec.	Material	Finish
LAM-3027-D28	Ø28	Nylon	Black
LAM-3027-RD28	Ø28	Nylon	Black



Item No.	Spec.	Material	Finish
LAM-3027-D28L	Ø28	Nylon	Black

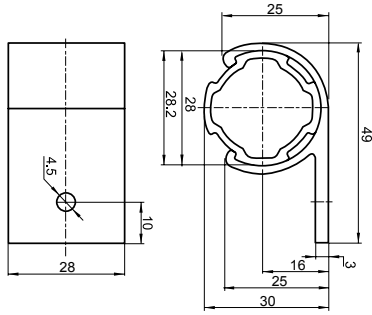


Item No.	Material
LAM-D28-081	Die-cast Alu.

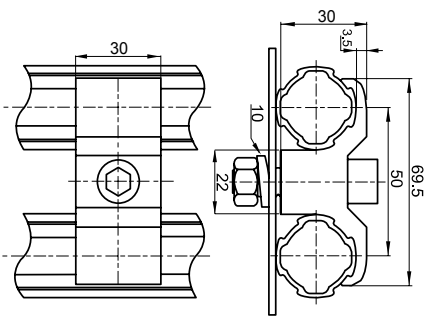


Item No.	Material
LAM-D28-082	Die-cast Alu.

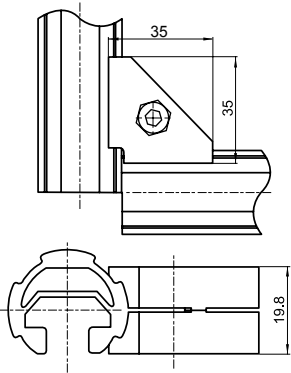
Round Profile D28



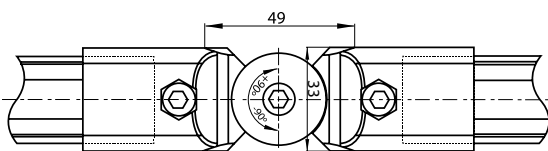
Item No.	Material
LAM-D28-083	Al alloy



Item No.	Material
LAM-D28-084	Die-cast Alu.

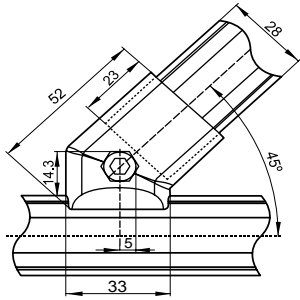


Item No.	Material
LAM-D28-085	Die-cast Alu.

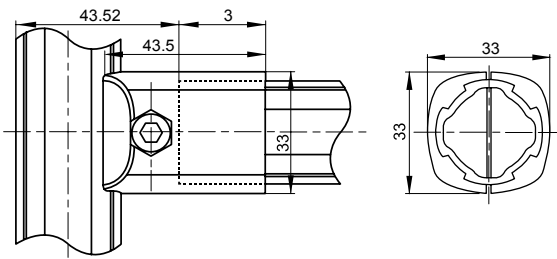


Item No.	Set screw & nut	Material	Finish
LAM-D28-86	M6 x 20	Die-cast Alu	Steel Zinc Plated

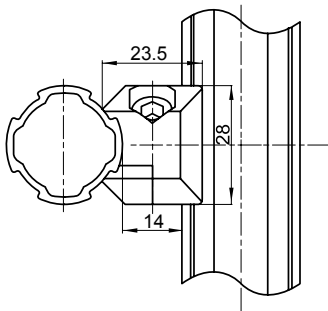
Round Profile D28



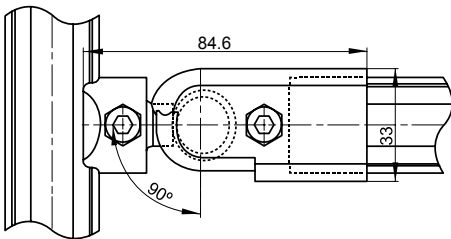
Item No.	Material
LAM-D28-090	Die-cast Alu.



Item No.	Material
LAM-D28-091	Die-cast Alu.

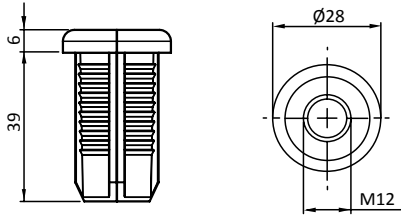


Item No.	Material
LAM-D28-092	Die-cast Alu.

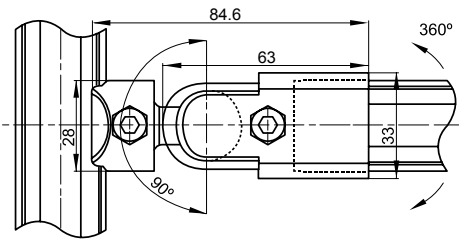


Item No.	Material
LAM-D28-093	Die-cast Alu.

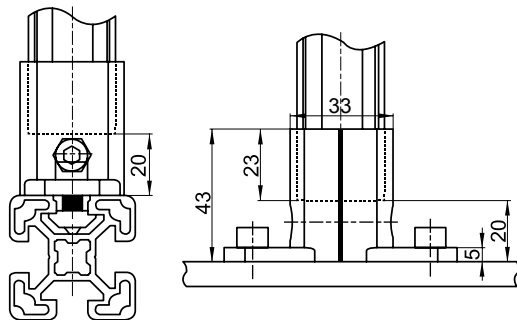
Round Profile D28



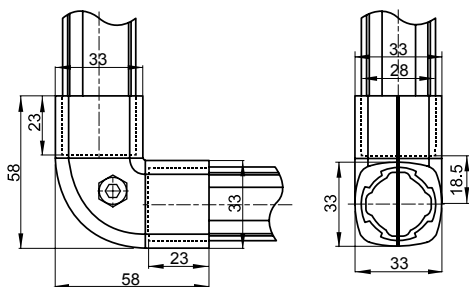
Item No.	Spec.	Material	Finish
LAM-D28-094	Set Threaded Sleeve Ø28	Nylon / Steel	Black



Item No.	Material
LAM-D28-095	Die-cast Alu.

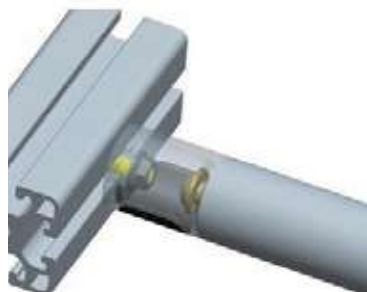
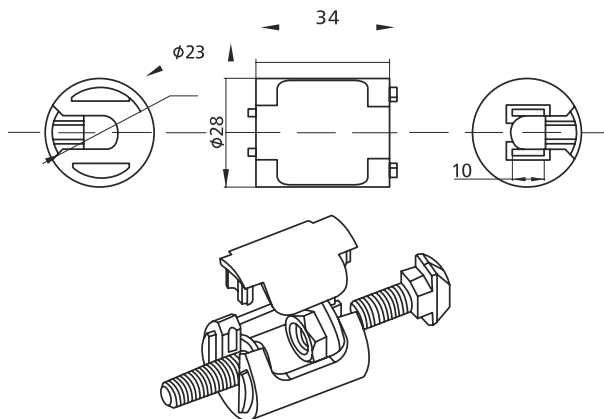


Item No.	Material
LAM-D28-097	Die-cast Alu.

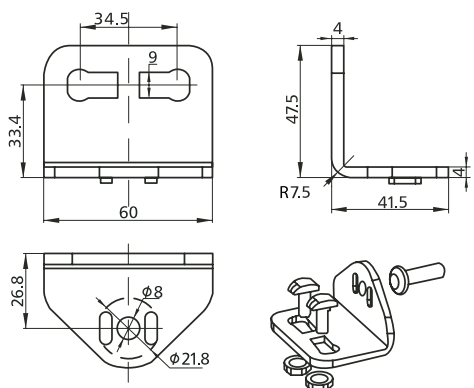


Item No.	Material
LAM-D28-099	Die-cast Alu.

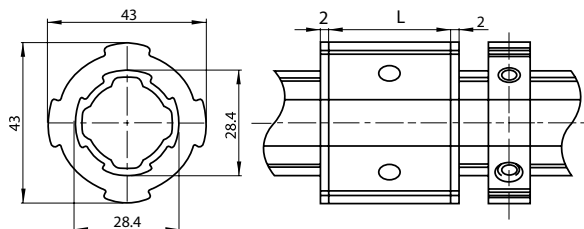
Round Profile D28



Item No.	Material	Finish
LAM-D28-101	Die-cast Alu, Strong Nylon, Steel	Plain, Black, Zinc Blue

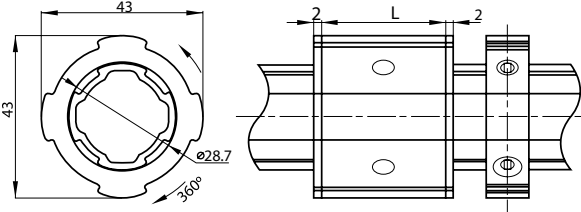


Item No.	Material	Finish
LAM-D28-102	Steel	Zinc Blue

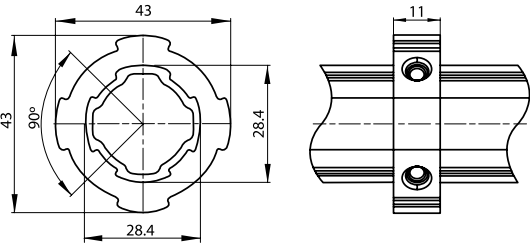


Item No.	L (mm)	Material
LAM-D28-105	55	Al Alloy
LAM-D28-106	100	Al Alloy

Round Profile D28



Item No.	L (mm)	Material
LAM-D28-108	55	Al Alloy
LAM-D28-109	100	Al Alloy



Item No.	Hex Socket Flat Screw	Material	Finish
LAM-D28-111	M5 x 6	Al Alloy	Steel Zinc Plated



APT

Aluminum Profile Technology

LAMARK S.A. DE C.V.

Bld. Bernardo Quintana No. 630 Int. 12

Col. Desarrollo San Pablo,

Querétaro, Qro. C.P. 76130

Tel. Oficina (442) 217 2084

ventas@lamark.com.mx

www.lamark.com.mx

www.aluminum-profile-technology.com